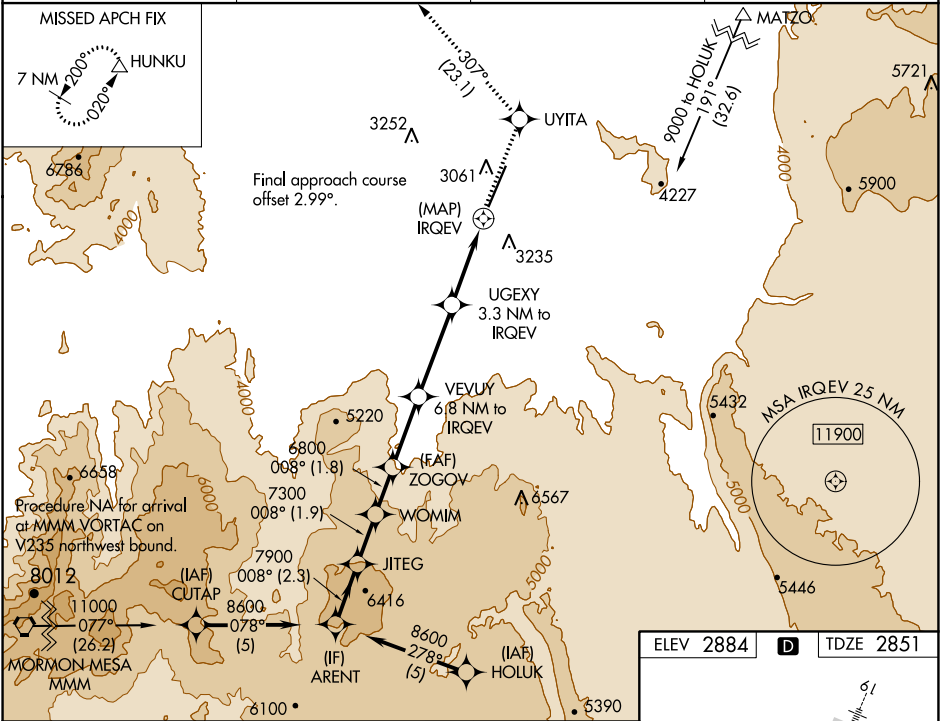


WAAS CH 50220 W01A	APP CRS 008°	Rwy Idg TDZE Apt Elev	9300 2851 2884
--	------------------------	-----------------------------	---

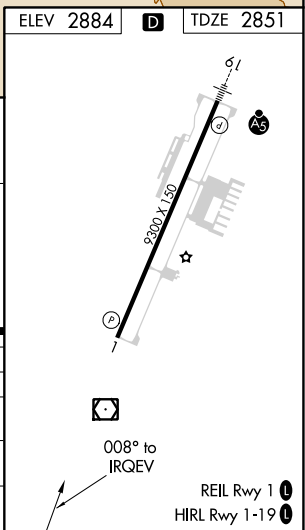
RNAV (GPS) RWY 1
ST GEORGE RGNL (SGU)

⚠ ⚠ -6°C	DME/DME RNP-0.3 NA. Helicopter visibility reduction below 1 SM NA. # Missed approach requires a minimum climb of 225 feet per NM to 6800. † Missed approach requires a minimum climb of 220 feet per NM to 6700.	MISSED APPROACH: Climb to 9800 direct UYITA and on track 307° to HUNKU and hold, continue climb-in-hold to 9800.
------------------------------	--	---

AWOS-3PT 135.075	LOS ANGELES CENTER 124.2 343.6	CLNC DEL 133.3	UNICOM 122.8 (CTAF) 0
----------------------------	--	--------------------------	---------------------------------



ARENT		VGS1 and RNAV glidepath not coincident (VGS1 Angle 3.00 /TCH 50).		9800	UYITA	tr	HUNKU
JITEG		WOMIM		ZOGOV		VEVUY	
GP 3.60°		TCH 60		UGEXY		IRGEV	
2.3 NM		1.9 NM		1.8 NM		2.7 NM	
CATEGORY		A		B		C	
LPV		DA#		3170-1		319 (300-1)	
LNAV MDA †		3340-1		489 (500-1)		3340-1 3/8	
LNAV MDA		3760-1 1/4		909 (900-1 1/4)		3760-2 1/2	
CIRCLING		3760-1 1/4		876 (900-1 1/4)		3760-2 1/2	



SW-4, 31 DEC 2020 to 28 JAN 2021

SW-4, 31 DEC 2020 to 28 JAN 2021