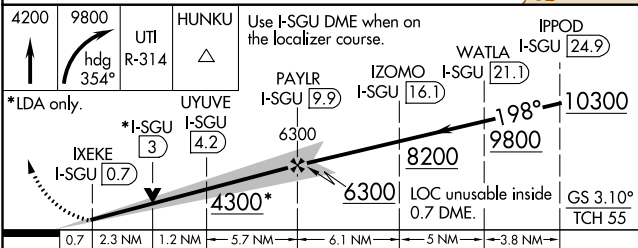
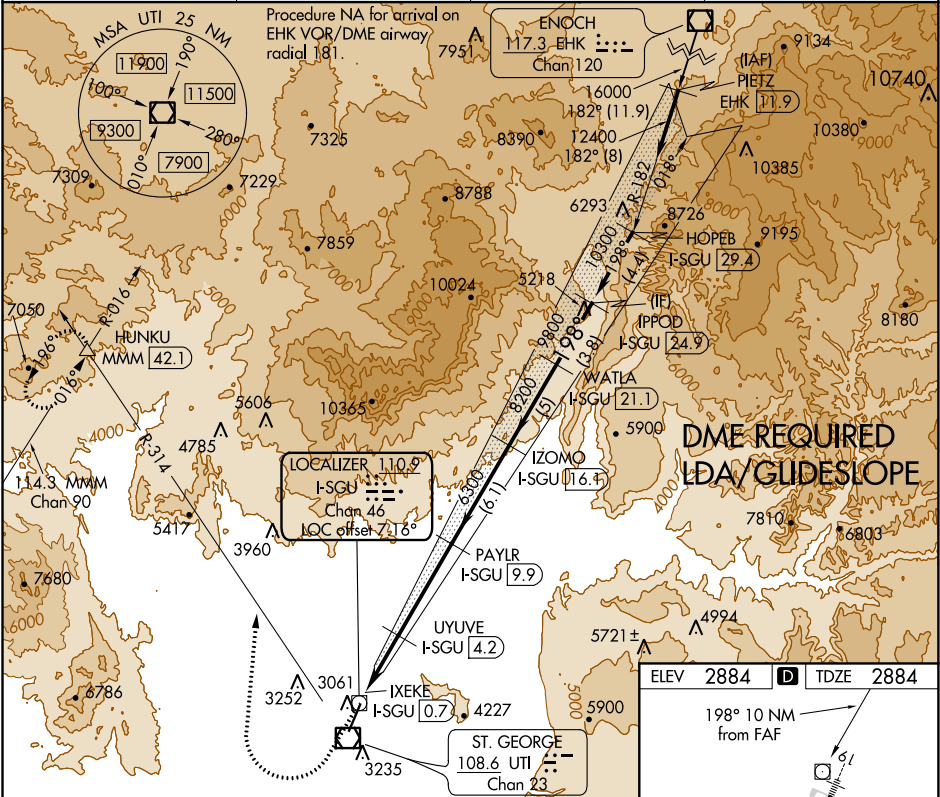


LOC/DME I-SGU	APP CRS	Rwy Idg	9300
110.9	198°	TDZE	2884
Chan 46		Apt Elev	2884

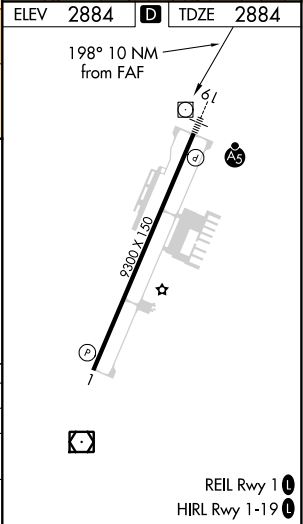
LDA RWY 19  
ST GEORGE RGNL (SGU)

<b>V</b> NA -6°C	DME required. For inop ALS, increase S-LDA/GS 19 all Cats visibility to ¾ SM.	<b>MALSR</b> 	MISSED APPROACH: Climb to 4200 then climbing right turn to 9800 on heading 354° and UTI VOR/DME R-314 to HUNKU INT/ MMM 42.1 DME and hold, continue climb-in-hold to 9800.
------------------------	---	------------------	--

AWOS-3PT 135.075	LOS ANGELES CENTER 124.2 343.6	CLNC DEL 133.3	UNICOM 122.8 (CTAF) <b>1</b>
---------------------	-----------------------------------	-------------------	---------------------------------



CATEGORY	A	B	C	D
S-LDA/GS 19	3170-½ 286 (300-½)			
S-LDA 19	3940-¾ 1056 (1100-¾)	3940-1 1056 (1100-1)	3940-2½ 1056 (1100-2½)	
CIRCLING	3940-1¼ 1056 (1100-1¼)	3940-1½ 1056 (1100-1½)	3940-3 1056 (1100-3)	



SW-4, 31 DEC 2020 to 28 JAN 2021

SW-4, 31 DEC 2020 to 28 JAN 2021