

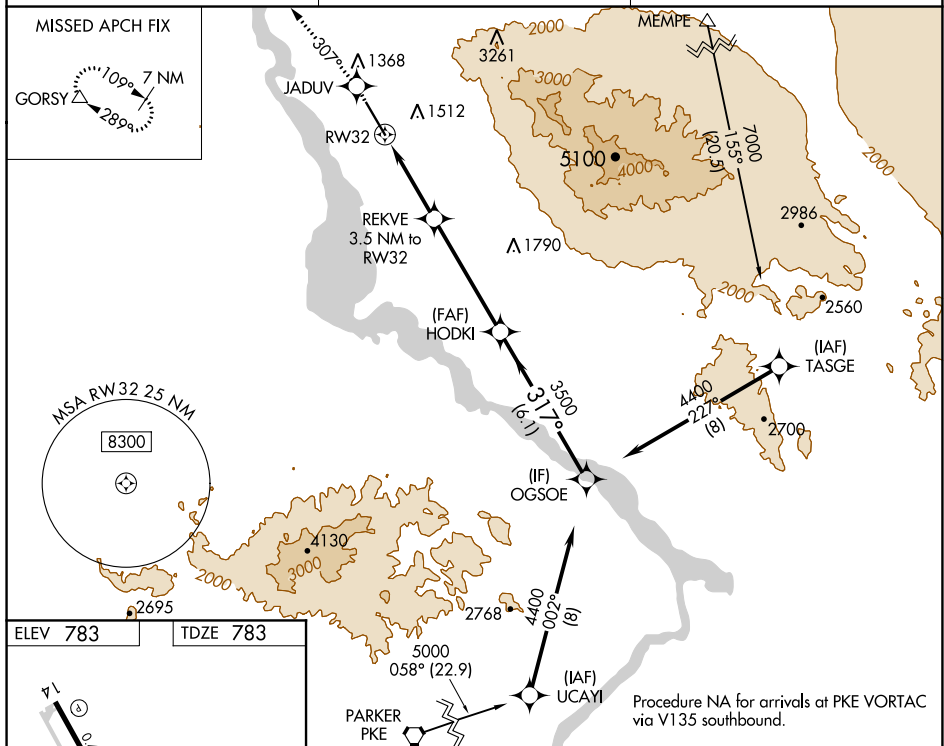
WAAS CH 49110 W32A	APP CRS 317°	Rwy Idg 8000 TDZE 783 Apt Elev 783
--	------------------------	---

RNAV (GPS) RWY 32
LAKE HAVASU CITY (HII)

V DME/DME RNP-0.3 NA. Visibility reduction by helicopters NA.
A NA When local altimeter setting not received, use Needles altimeter setting and increase all DA/MDA 80 feet and all visibilities ½ mile.
 VDP NA when using Needles altimeter setting.
 Circling NA northeast of Rwy 14-32.

MISSED APPROACH: Climb to 6300 direct JADUV and via 307° track to GORSY and hold, continue climb-in-hold to 6300.

AWOS-3 119.025	LOS ANGELES CENTER 134.65 360.65	UNICOM 122.7 (CTAF) 0
--------------------------	--	---------------------------------



6300 ↑ JADUV 307° tr GORSY △

VGSI and RNAV glidepath not coincident (VGSI Angle 3.00/TCH 36).

OGSOE

*LNAV only.

REKVE 3.5 NM to RW32

*2.6 NM to RW32

1940*

HODKI

317°

3500

4400

Procedure Turn NA

GP 3.00°

TCH 50

CATEGORY	A	B	C	D
LPV DA	1265-1 $\frac{3}{4}$	482 (500-1 $\frac{3}{4}$)		
LNAV MDA	1660-1 877 (900-1)	1660-1 $\frac{1}{4}$ 877 (900-1 $\frac{1}{4}$)	1660-2 $\frac{1}{2}$ 877 (900-2 $\frac{1}{2}$)	1660-2 $\frac{3}{4}$ 877 (900-2 $\frac{3}{4}$)
CIRCLING	1660-1 877 (900-1)	1660-1 $\frac{1}{4}$ 877 (900-1 $\frac{1}{4}$)	1660-2 $\frac{1}{2}$ 877 (900-2 $\frac{1}{2}$)	1660-2 $\frac{3}{4}$ 877 (900-2 $\frac{3}{4}$)