

LOC/DME I-HWG	APP CRS	Rwy Idg	4199
110.7	120°	TDZE	2189
Chan 44		Apt Elev	2205

ILS or LOC RWY 12L

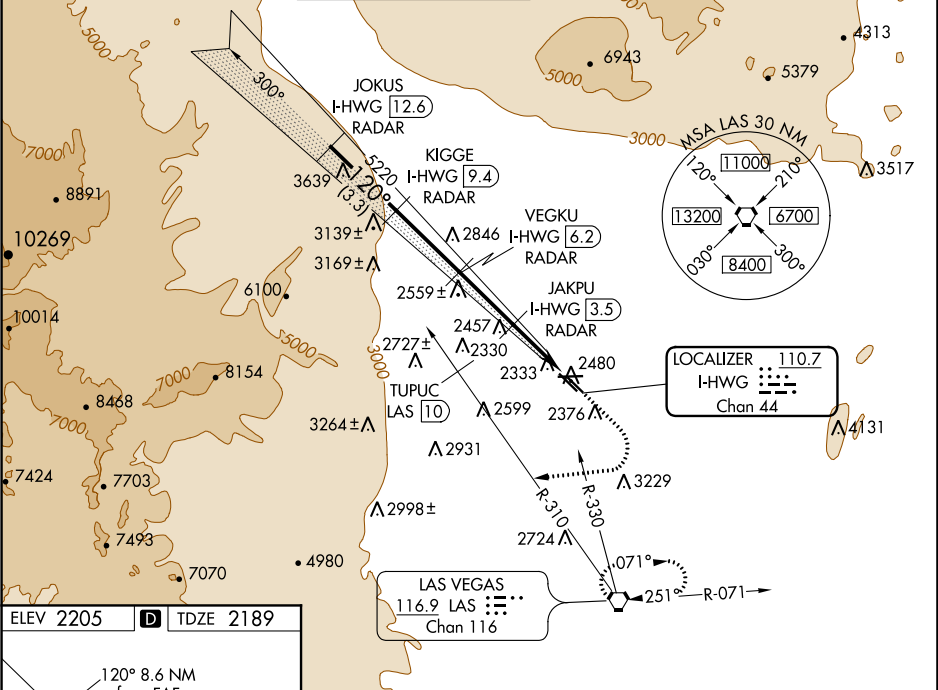
NORTH LAS VEGAS (VGT)

DME and RADAR required.

▼ When local altimeter setting not received, use McCarran Intl altimeter setting and increase DA to 2478, and visibility Cats A/B ¼ mile; increase all MDA 40 feet. Rwy 12L helicopter visibility reduction below ¾ SM NA.

MISSED APPROACH: Climb to 2600, then climbing right turn heading 250° to 6000, intercept LAS R-310 outbound to TUPUC/LAS 10 DME then turn right via LAS R-330 inbound to LAS VORTAC and hold.

ATIS	LAS VEGAS APP CON	NORTH LAS VEGAS TOWER*	GND CON	CLNC DEL	UNICOM
118.05	119.4 360.85	125.7 (CTAF) 360.75	121.7	124.0	122.95



ELEV 2205 TDZE 2189

120° 8.6 NM from FAF

REIL all Rws  
MIRL all Rws

FAF to MAP 8.6 NM

Knots	60	90	120	150	180
Min:Sec	8:36	5:44	4:18	3:26	2:52

CATEGORY	JOKUS I-HWG 12.6 RADAR		KIGGE I-HWG 9.4 RADAR		2600	6000	LAS R-310 outbound	TUPUC LAS 10	LAS R-330 inbound	LAS
	5220		5220		6200	120°	5220	VEGKU I-HWG 6.2 RADAR	JAKPU I-HWG 3.5 RADAR	I-HWG 0.8
GS 3.20° TCH 48		*LOC only		*3260						
		3.3 NM		3.2 NM		2.7 NM		2.7 NM		
S-ILS 12L		2456-1 267 (300-1)						NA		
S-LOC 12L		2620-1 431 (500-1)						NA		
CIRCLING		2720-1 515 (600-1)						NA		