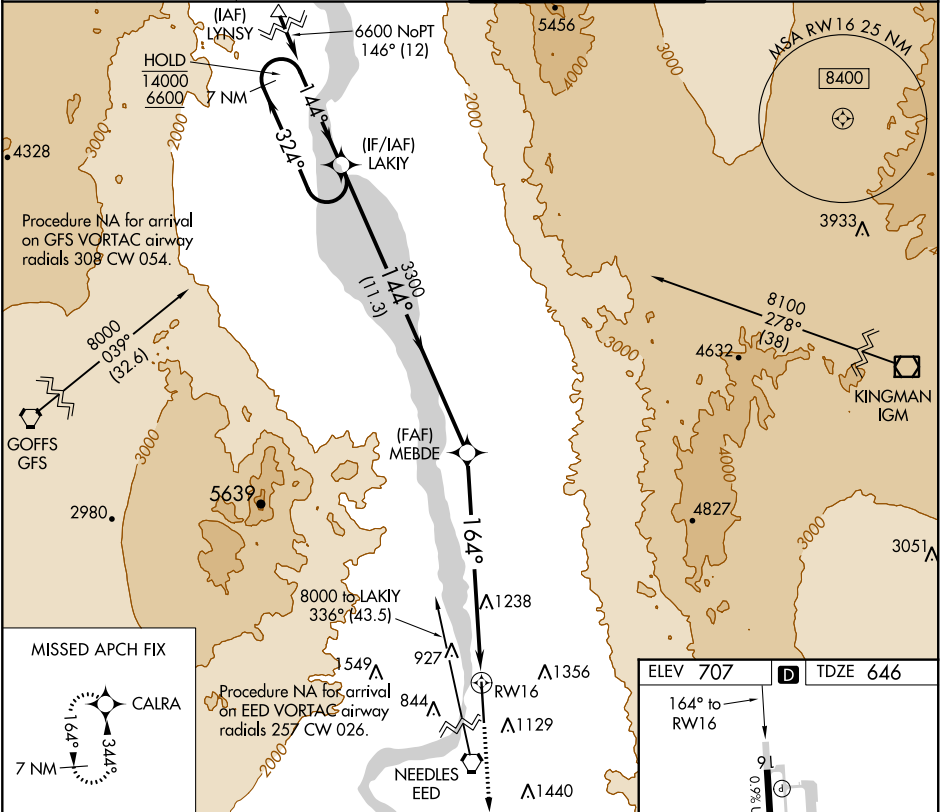


WAAS CH 82624 W16A	APP CRS 164°	Rwy Idg TDZE Apt Elev	8500 646 707
--	------------------------	-----------------------------	---

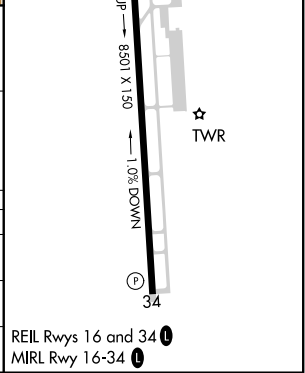
RNAV (GPS) RWY 16
LAUGHLIN/BULLHEAD INTL (IFP)

RNP APCH.	MISSED APPROACH: Climb to 6300 direct CALRA and hold, continue climb-in-hold to 6300.
Procedure NA at night. Rwy 16 helicopter visibility reduction below 3/4 SM NA.	

ATIS ★ 119.825	LOS ANGELES CENTER 134.65 360.65	BULLHEAD TOWER ★ 123.9 (CTAF) 0	GND CON 118.25
--------------------------	--	---	--------------------------



7 NM Holding Pattern		LAKY		VGSi and RNAV glidepath not coincident. (VGSi Angle 3.00/TCH 49).		MEBDE		3.7 NM to RW16		RW16		6300		CALRA	
14000 6600		← 324° → 144°		144°		3.00° TCH 46		3300		✖ -164°					
				11.3 NM		4.6 NM		3.7 NM							
CATEGORY		A		B		C		D							
LP MDA		1860-1¼ 1214 (1200-1¼)		1860-1½ 1214 (1200-1½)		1860-3		1214 (1200-3)							
LNAV MDA		1860-1¼ 1214 (1200-1¼)		1860-1½ 1214 (1200-1½)		1860-3		1214 (1200-3)							
CIRCLING		1860-1¼ 1153 (1200-1¼)		1860-1½ 1153 (1200-1½)		1860-3 1153 (1200-3)		2340-3 1633 (1700-3)							



SW-4, 31 DEC 2020 to 28 JAN 2021

SW-4, 31 DEC 2020 to 28 JAN 2021