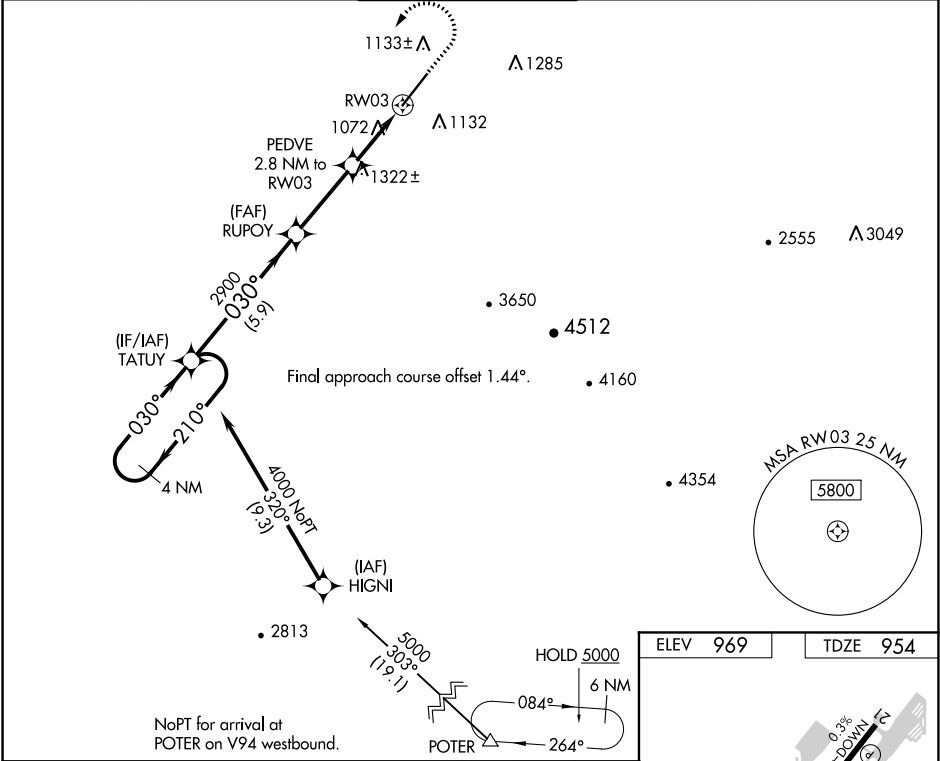


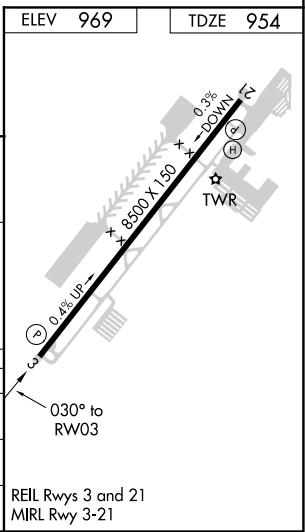
WAAS CH 42839 W03A	APP CRS 030°	Rwy ldg 8500 TDZE 954 Apt Elev 969
--	------------------------	---

RNAV (GPS) RWY 3
PHOENIX GOODYEAR (GYR)

RNP APCH.		MISSED APPROACH: Climb to 1900 then climbing left turn to 4000 direct TATUY and hold.	
Procedure NA at night. Helicopter visibility reduction below 3/4 SM NA. VDP NA when using Phoenix Sky Harbor Intl altimeter setting. When local altimeter setting not received, use Phoenix Sky Harbor Intl altimeter setting: increase all MDA 80 feet and visibility LP/LNAV Cat C/D and Circling Cat C 1/4 SM.			
ATIS 118.35	LUKE APP CON ★ 125.45 263.125	GOODYEAR TOWER ★ 120.1 (CTAF) 239.3	GND CON 121.7
		UNICOM 122.95	



4 NM Holding Pattern		TATUY		RUPOY		PEDVE		RW03	
4000		210°		030°		030°		1900	
		030°						4000	
								TATUY	
								1.1 NM to RW03	
								3.00° TCH 53	
								RW03	
								1.1 NM	
								1.7 NM	
								3.2 NM	
								5.9 NM	
CATEGORY		A		B		C		D	
LP MDA		1340-1		386 (400-1)		1340-1 1/8		386 (400-1 1/8)	
LNAV MDA		1580-1		626 (700-1)		1580-1 3/4		626 (700-1 3/4)	
CIRCLING		1580-1		611 (700-1)		1860-2 3/4		1920-3	
						891 (900-2 3/4)		951 (1000-3)	



SW-4, 31 DEC 2020 to 28 JAN 2021

SW-4, 31 DEC 2020 to 28 JAN 2021