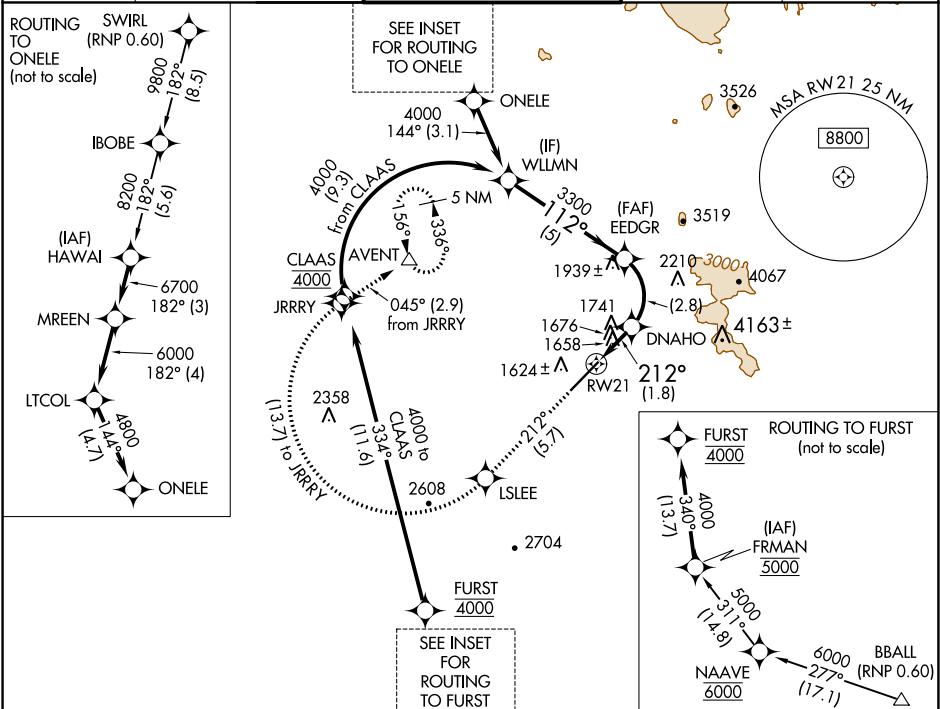


APP CRS <b>212°</b>	Rwy Idg <b>7669</b>
	TDZE <b>1510</b>
	Apt Elev <b>1510</b>

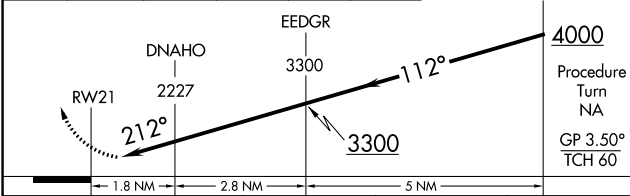
**RNAV (RNP) RWY 21**  
SCOTTSDALE (SDL)

<p><b>RF and GPS required. Visibility reduction by helicopters NA.</b> For uncompensated Baro-VNAV systems, procedure NA below 1°C (31°F) or above 44°C (112°F). When local altimeter setting not received procedure NA.</p>	<p><b>MISSED APPROACH:</b> Climb to 5000 via track 212° to LSLEE, and via right turn to JRRRY, and via track 045° to AVENT and hold.</p>
--	--

ATIS ★ <b>118.6</b>	PHOENIX APP CON <b>120.7 239.0</b>	SCOTTSDALE TOWER ★ <b>119.9 (CTAF) 0</b>	GND CON <b>121.6</b>	CLNC DEL <b>124.8</b>
------------------------	---------------------------------------	---	-------------------------	--------------------------

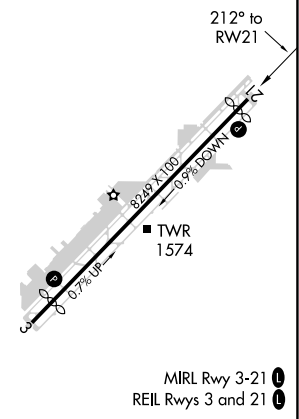


5000 ↑ tr 212°	LSLEE	JRRRY	tr 045°	AVENT	VGSI and RNAV glidepath not coincident (VGSI Angle 4.00/TCH 40).
----------------------	-------	-------	---------	-------	--



CATEGORY	A	B	C	D
RNP 0.10 DA	1948-1¼	438 (500-1¼)		NA
RNP 0.16 DA	1987-1½	477 (500-1½)		NA

ELEV 1510	<b>D</b>	TDZE 1510
-----------	----------	-----------



**AUTHORIZATION REQUIRED**

SW-4, 31 DEC 2020 to 28 JAN 2021

SW-4, 31 DEC 2020 to 28 JAN 2021