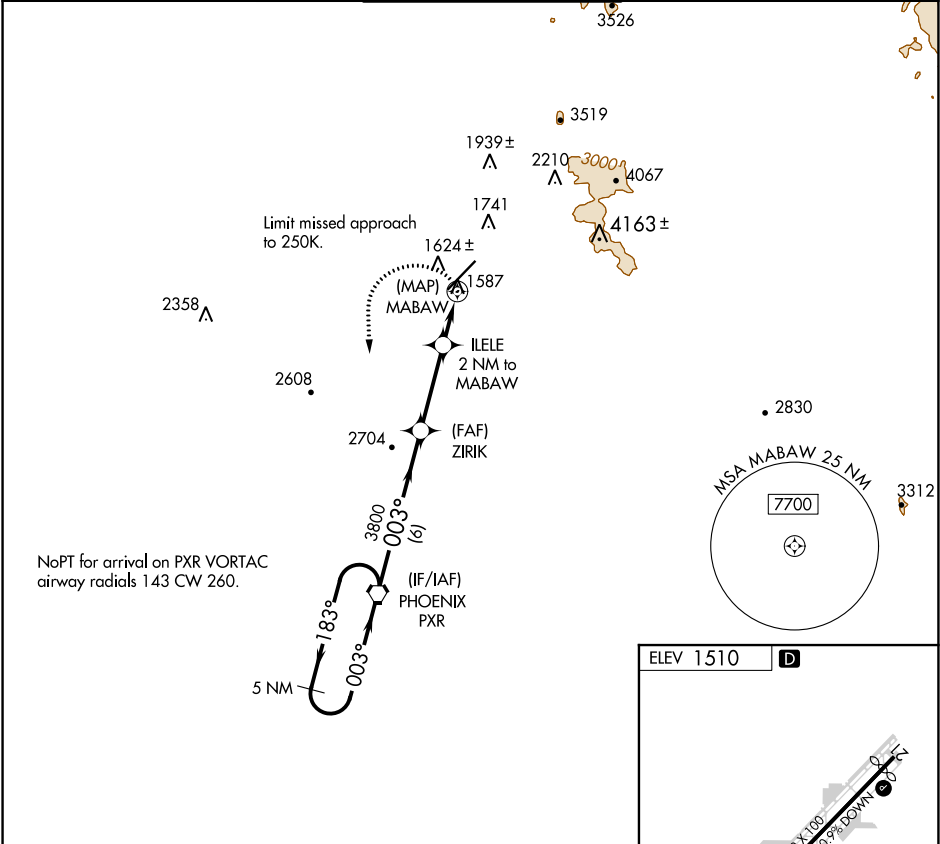


APP CRS	Rwy Idg	N/A
003°	TDZE	N/A
	Apt Elev	1510

RNAV (GPS)-E
SCOTTSDALE (SDL)

<p>⚠ When VGSI inoperative, circling Rwy 21 NA at night. When local altimeter setting not received, use Phoenix Sky Harbor Intl altimeter setting and increase all MDA 100 feet and increase Cat B visibility ¼ mile; increase Cat C and D visibility ½ mile. DME/DME RNP-0.3 NA.</p>	<p>MISSED APPROACH: Climbing left turn to 4200 direct PXR VORTAC and hold.</p>
---	--

ATIS ★ 118.6	PHOENIX APP CON 120.7 239.0	SCOTTSDALE TOWER ★ 119.9 (CTAF) 0	GND CON 121.6	CLNC DEL 124.8
-----------------	--------------------------------	--------------------------------------	------------------	-------------------



<p>5 NM Holding Pattern</p> <p>4200 ← 183° 003° →</p> <p>PXR VORTAC</p> <p>ZIRIK</p> <p>ILELE 2 NM to MABAW</p> <p>MABAW</p> <p>3800</p> <p>2780</p> <p>6 NM 3.2 NM 2 NM</p>				
CATEGORY	A	B	C	D
CIRCLING	2140-1	630 (700-1)	2140-2	630 (700-2)

