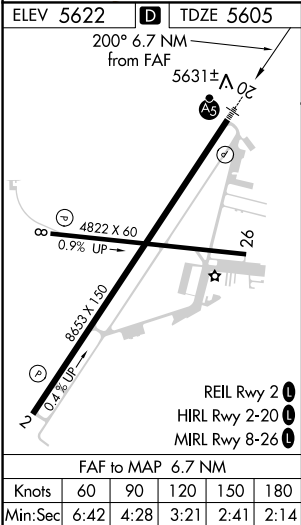
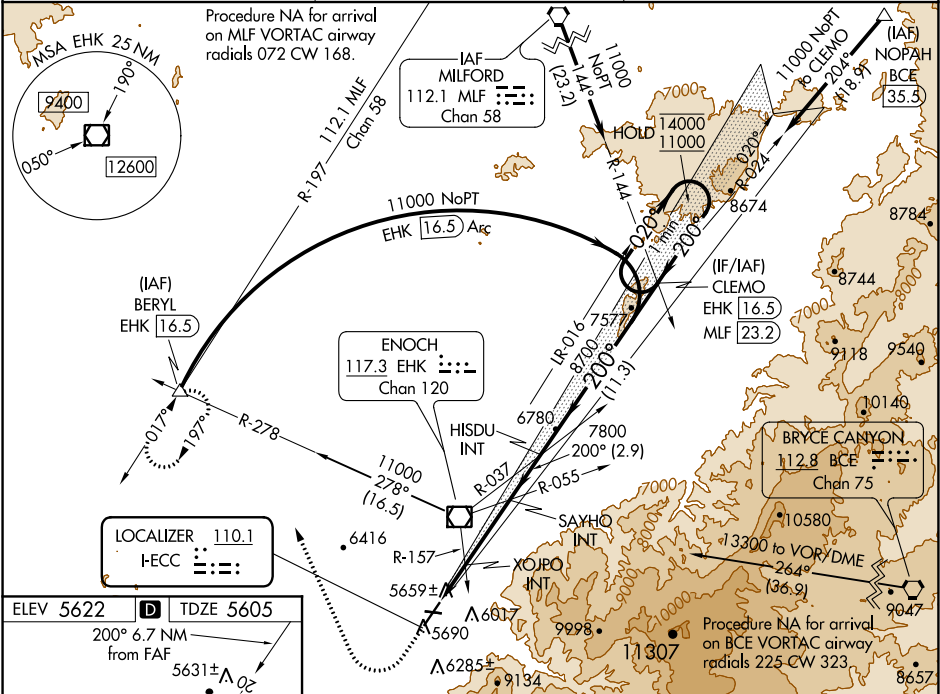


LOC I-ECC	APP CRS	Rwy Idg	8653
110.1	200°	TDZE	5605
		Apt Elev	5622

ILS or LOC RWY 20  
CEDAR CITY RGNL(CDC)

DME required.	MALSR	MISSED APPROACH: Climb to 6200 then climbing right turn to 10000 on heading 322° and on EHK R-278 to BERYL INT/EHK 16.5 DME and hold, continue climb-in-hold to 10000. † Missed approach requires minimum climb of 210 feet per NM to 7300.
NA XOJPO fix minimums (Dual VOR receivers required): For inop ALS, increase S-LOC 20 Cats C/D visibility to 1½ SM. For inop ALS, increase S-LOC 20 Cats C/D visibility to 2½ SM. #For inop ALS, increase S-ILS 20 visibility all Cats to 1 SM.		

ASOS 119.025	SALT LAKE CITY CENTER 125.575 379.275	UNICOM 123.0 (CTAF) 0
-----------------	--	--------------------------



6200	10000	BERYL	CLEMO	One Minute Holding Pattern
↑	hdg 322°	EHK R-278	EHK 16.5	
* LOC only		SAYHO INT		
		XOJPO INT		
		7800		
		6440*		
		7800		
		2.4 NM	4.3 NM	2.9 NM
				11.3 NM
CATEGORY	A	B	C	D
S-ILS 20†		5825-½	220 (300-½)	
S-ILS 20 #		5882-½	277 (300-½)	
S-LOC 20	6440-½ 835 (900-½)	6440-¾ 835 (900-¾)	6440-1⅞ 835 (900-1⅞)	
XOJPO FIX MINIMUMS (DUAL VOR RECEIVERS REQUIRED)				
S-LOC 20	6100-½	495 (500-½)	6100-1	495 (500-1)

SW-4, 31 DEC 2020 to 28 JAN 2021

SW-4, 31 DEC 2020 to 28 JAN 2021