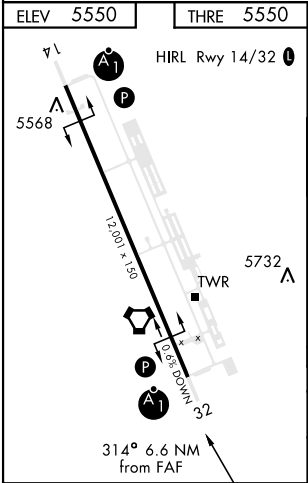
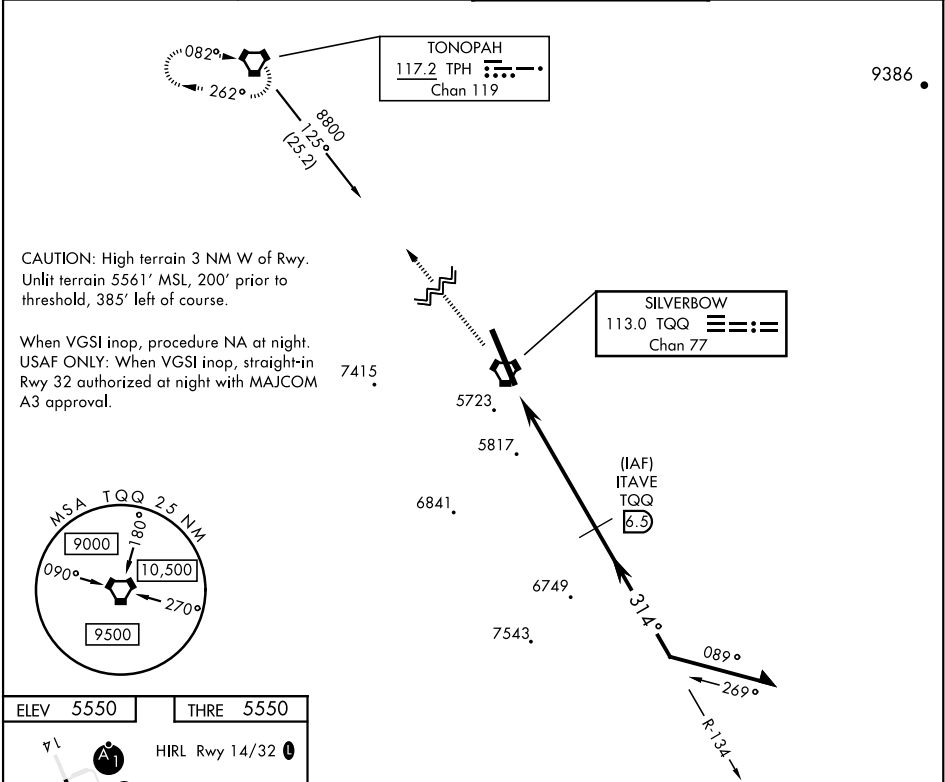





VOR/DME Z RWY 32

VORTAC TQQ 113.0 Chan 77	APCH CRS 314°	Rwy Idg THRE 5550 Arpt Elev 5550	AL-3188 [USAF]	TONOPAH TEST RANGE (KTNX)
* Circling not authorized W of Rwy 14/32			ALSF-1	MISSED APPROACH: Climb to 11,000 direct to TPH VORTAC and hold. Continue climb in holding to 11,000.
AWOS 113.0	NELLIS CONTROL 119.35 254.4	SILVERBOW TOWER 124.75 257.95	GND CON 127.25 335.5	



EMERG SAFE ALT 100 NM 16,600 FROM TQQ					
<div>11,000</div> <div>↑</div>		<div>TPH</div> <div></div>		<div>ITAVE</div> <div>6.5</div>	
				Remain within 10 NM	
<div>VORTAC</div> <div></div>		<div>ITIGE</div> <div>2.2</div>		<div>8800</div>	
<div>0.5</div>		<div>5.5 NM</div>		<div>7400</div>	
				<div>134°</div> <div>314°</div> <div>2.84°</div> <div>TCH 39</div>	
CATEGORY	A	B	C	D	E
S-32	6080/24	530 (600- ½)	6080/55 530 (600-1)	NOT AUTHORIZED	
 CIRCLING*	6080-1	530 (600-1)	6080-1½ 530 (600-1½)	NOT AUTHORIZED	

VOR/DME Z RWY 32

SW-4, 31 DEC 2020 to 28 JAN 2021

SW-4, 31 DEC 2020 to 28 JAN 2021