

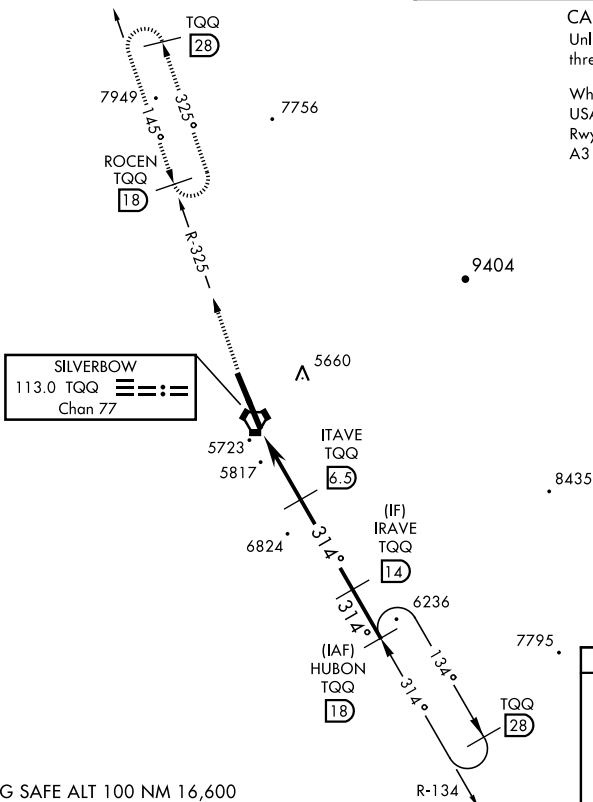
VOR/DME or TACAN RWY 32

VORTAC TQO 113.0 Chan 77	APCH CRS 314°	Rwy ldg 12,001 THRE 5550 Arprt Elev 5550
--	-------------------------	---

AL-3188 [USAF]

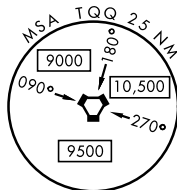
TONOPAH TEST RANGE (KTNX)

▼ * When ALS inop, increase CAT CDE vis to 1½ miles. ** Circling NA W of Rwy 14/32		ALSF-1 	MISSED APPROACH: Climb to 11,000 via TQQ VORTAC R-325 to ROCEN and hold, continue climb in hold to 11,000.	
AWOS 113.0	NELLIS CONTROL 119.35 254.4	SILVERBOW TOWER ★ 124.75 257.95 0		GND CON 127.25 335.5



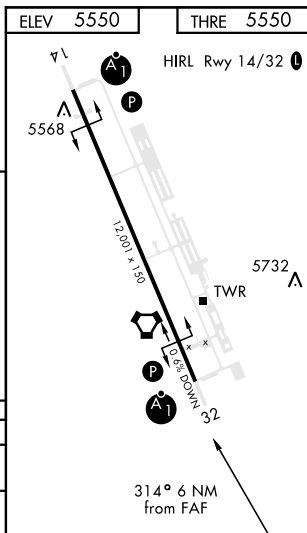
CAUTION: High terrain 3 NM W of Rwy. Unlit terrain 5561' MSL, 200' prior to threshold, 385' left of course.

When VGSi inop, procedure NA at night.
 USAF ONLY: When VGSi inop, straight-in Rwy 32 authorized at night with MAJCOM A3 approval.



EMERG SAFE ALT 100 NM 16,600

11,000	ROCEN TQO 18	ITAVE 6.5	IRAVE 14	HUBON 18	10,400
TQO R-325					
VORTAC	ITOGE 1				
		7400	8700		
	0.5 NM	5.5 NM			
CATEGORY	A	B	C	D	E
S-32 *	6080-1 530 (600-1)				
CIRCLING **	6080-1 530 (600-1)	6080-1½ 530 (600-1½)	6100-2 550 (600-2)		



VOR/DME or TACAN RWY 32