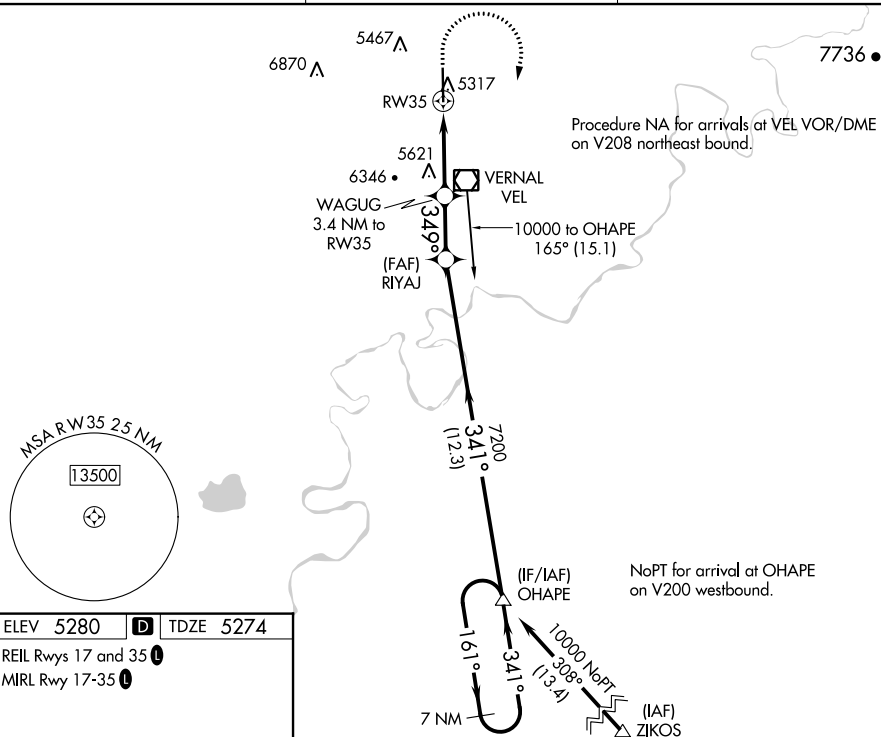


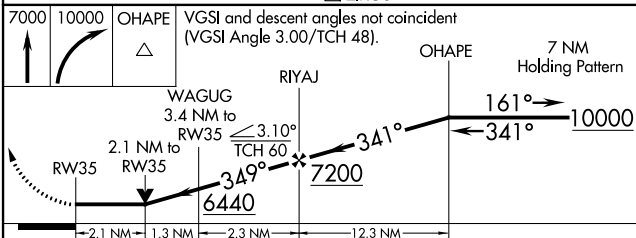
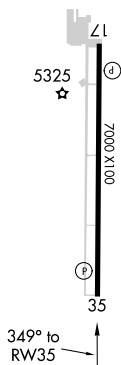
RNAV (GPS) Y RWY 35  
VERNAL RGNL (VEL)

**MISSED APPROACH:** Climb to 7000 then climbing right turn to 10000 direct OHAPE and hold.

\*Missed approach requires minimum climb of 300 feet per NM to 7500

UNICOM  
122.7 (CTAF) **L**

REIL Rwy 17 and 35 **L**  
MIRL Rwy 17-35 **L**



CATEGORY	A	B	C	D
INAV MDA*	5980-1 706 (700-1)		5980-2 706 (700-2)	
INAV MDA	6380-1¼ 1106 (1100-1¼)	6380-1½ 1106 (1100-1½)	6380-3 1106 (1100-3)	
C CIRCLING	6380-1¼ 1100 (1100-1¼)	6380-1½ 1100 (1100-1½)	6380-3 1100 (1100-3)	6400-3 1120 (1200-3)

VERNAL RGNL (VEL)

RNAV (GPS) Y RWY 35

SW-4, 31 DEC 2020 to 28 JAN 2021