

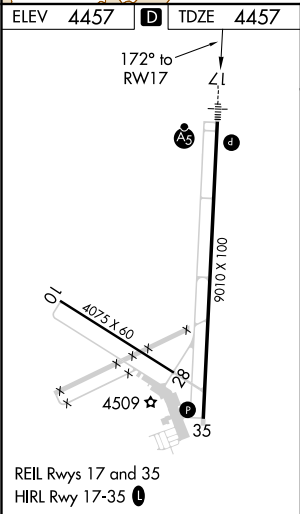
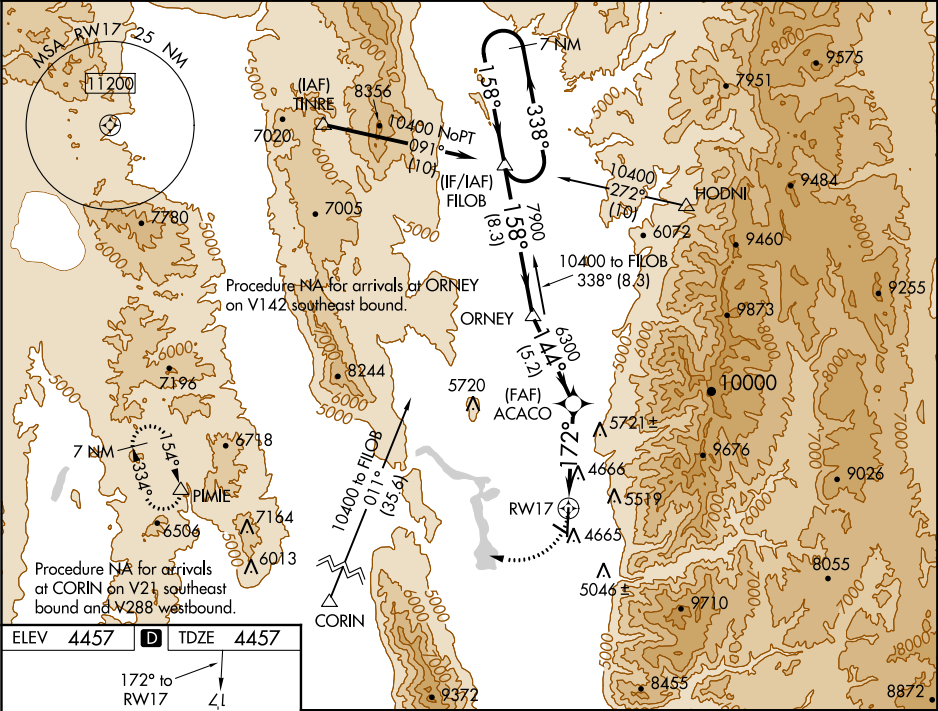
APP CRS	Rwy Idg	9010
172°	TDZE	4457
	Apt Elev	4457

RNAV (GPS) RWY 17

LOGAN-CACHE (LGU)

<div><div><div><div></div><div></div><div></div></div><div><div></div><div></div><div></div></div></div><div><div></div><div></div><div></div></div></div> <div>DME/DME RNP-0.3 NA. Circling NA east of Rwy 17-35. Night Landing: Rwy 10-28 NA. Inop table does not apply to LNAV Cats C/D. *Missed approach requires minimum climb of 310 feet per NM to 7700.</div>	<div>MALSR</div> <div><div></div><div></div><div></div></div>	<div>MISSED APPROACH:</div> <div>Climbing right turn to 10000 direct PIMIE and hold, continue climb-in-hold to 10000.</div>
---	---	---

ASOS 135.275	SALT LAKE CENTER 127.7 354.125	UNICOM 122.8 (CTAF) 0
-----------------	-----------------------------------	--------------------------



10000

PIMIE

△

VGSI and descent angles not coincident
(VGSI Angle 3.00/TCH 40).

7 NM

FILOB

Holding Pattern

ACACO

ORNEY

FILOB

10400

338°→

←158°

158°

7900

6300

172°

144°

1.9 NM to RW17

3.00°

TCH 50

1.9

3.7 NM

5.2 NM

8.3 NM

CATEGORY	A	B	C	D
*LNAV MDA	5100-½	643 (700-½)	5100-1⅓	643 (700-1⅓)
LNAV MDA	5800-¾ 1343 (1400-¾)	5800-1 1343 (1400-1)	5800-3	1343 (1400-3)
C CIRCLING	5800-1¼ 1343 (1400-1¼)	5800-1½ 1343 (1400-1½)	5800-3	1343 (1400-3)