

| | | | | |
|---|------------------------|----------|--------------|--------------|
| VORTAC LAS 116.9 Chan 116 | APP CRS 262° | Rwy Idg | 26L | 26R |
| | | TDZE | 10525 | 12639 |
| | | Apt Elev | 2069 | 2067 |
| | | | 2181 | 2181 |

VOR RWY 26L/R
MC CARRAN INTL (LAS)

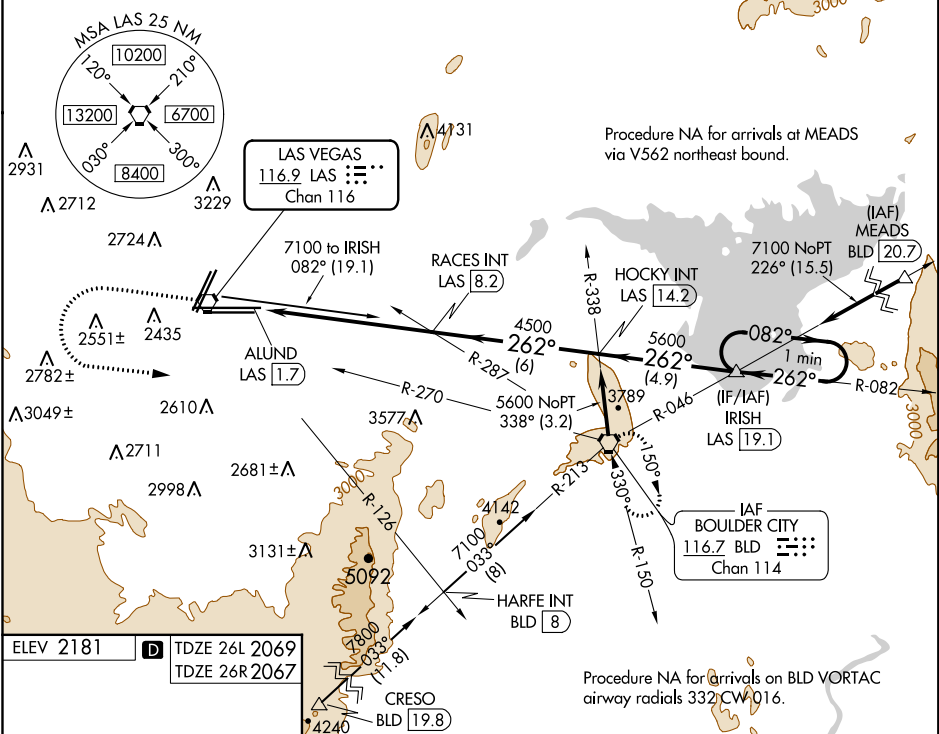
⚠ For inop ALS, increase S-26L and S-26R Cat D visibility ¼ SM.

MALSF Rwy 26L

MALS Rwy 26R

MISSED APPROACH: Climb to 4000 then climbing left turn to 6000 on heading 074° and BLD R-270 to BLD VORTAC and hold.

| | | | | | |
|------------------------|--|--|---|--------------------------|-------|
| D-ATIS 132.4 | LAS VEGAS APP CON 125.025 379.15 (West) 125.6 282.2 (East) | LAS VEGAS TOWER 118.75 257.8 (Rwy 1L/19R, 1R/19L) 119.9 257.8 (Rwy 8L/26R, 8R/26L) | GND CON 121.1 270.8 E of 1R/19L 121.9 254.3 W of 1R/19L | CLNC DEL 118.0 | CPDLC |
|------------------------|--|--|---|--------------------------|-------|



ELEV 2181

TDZE 26L 2069
TDZE 26R 2067

REIL Rwy 1R, 8R, 19L and 19R
MIRL Rwy 1R-19L
HIRL Rwy 1L-19R, 8L-26R and 8R-26L

FAF to MAP 6.5 NM

| Knots | 60 | 90 | 120 | 150 | 180 |
|---------|------|------|------|------|------|
| Min:Sec | 6:30 | 4:20 | 3:15 | 2:36 | 2:10 |

| | | | | | | | | |
|----------|-------------------------|--|-------------------------|--|--------------------------|--|-------------------------|--|
| CATEGORY | A | | B | | C | | D | |
| | S-26L | | S-26R | | S-26L | | S-26R | |
| CIRCLING | 3020-1¼ 839 (900-1¼) | | 3040-1¼ 859 (900-1¼) | | 3100-2¾ 919 (1000-2¾) | | 3540-3 1359 (1400-3) | |

SW-4, 31 DEC 2020 to 28 JAN 2021

SW-4, 31 DEC 2020 to 28 JAN 2021