
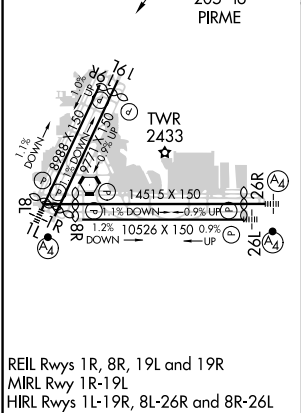
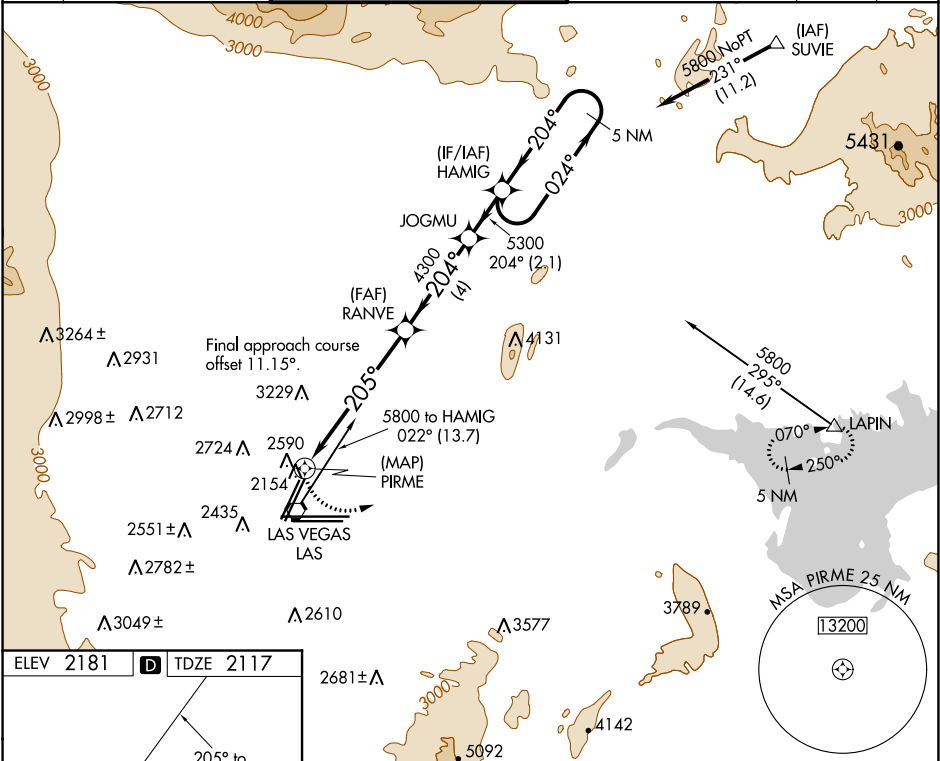


WAAS CH <b>50142</b> <b>W19B</b>	APP CRS <b>205°</b>	Rwy Idg TDZE Apt Elev	<b>8400</b> <b>2117</b> <b>2181</b>
--	------------------------	-----------------------------	---

**RNAV (GPS) RWY 19R**  
MC CARRAN INTL (LAS)

 Rwy 19R helicopter visibility reduction below 3/4 SM NA. DME/DME RNP- 0.3 NA.	MISSED APPROACH: Climbing left turn to 6000 direct LAPIN and hold.
--	---

D-ATIS <b>132.4</b>	LAS VEGAS APP CON <b>125.025 379.15 (West)</b> <b>125.6 282.2 (East)</b>	LAS VEGAS TOWER <b>118.75 257.8 (Rwy 1L/19R, 1R/19L)</b> <b>119.9 257.8 (Rwy 8L/26R, 8R/26L)</b>	GND CON <b>121.1 270.8 E of 1R/19L</b> <b>121.9 254.3 W of 1R/19L</b>	CLNC DEL <b>118.0</b>	CPDLC
------------------------	--	--	---	--------------------------	-------



--	--

SW-4, 31 DEC 2020 to 28 JAN 2021

SW-4, 31 DEC 2020 to 28 JAN 2021