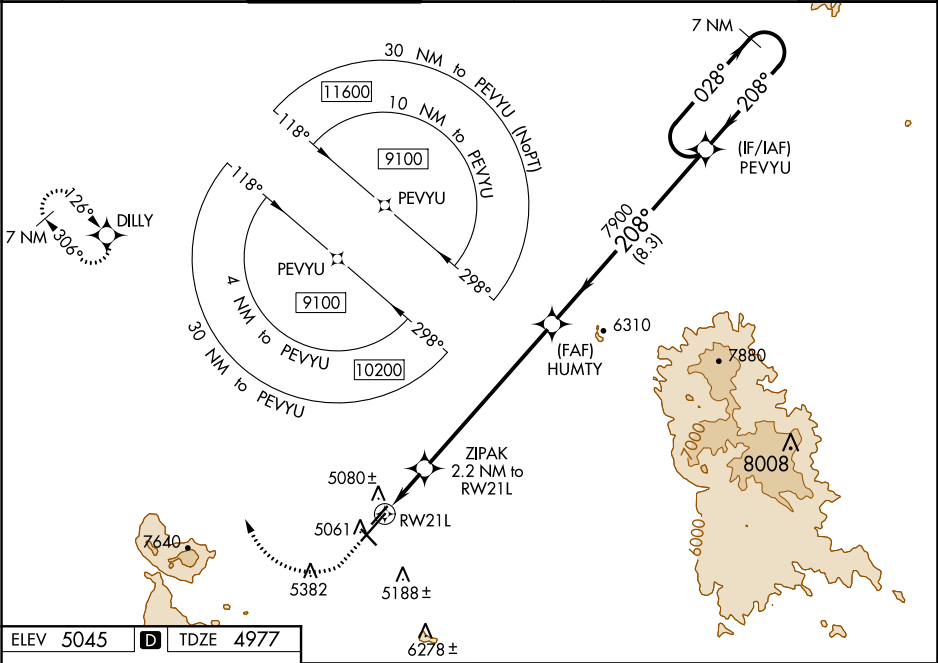


| | | | |
|--|------------------------|-----------------------------|---|
| WAAS CH 40002 W21A | APP CRS 208° | Rwy Idg TDZE Apt Elev | 7619 4977 5045 |
|--|------------------------|-----------------------------|---|

RNAV (GPS) RWY 21L

PRESCOTT RGNL - ERNEST A LOVE FIELD (PRC)

| | | | | | | |
|--|-----------------------|----------------------------------|--------------|---------------|--|-------------------------|
| RNP APCH. | | MALSR | | | MISSED APPROACH: Climb to 5500 then climbing right turn to 9100 direct DILLY and hold, continue climb-in-hold to 9100. | |
| ▼ ▲ For uncompensated Baro-VNAV systems, LNAV/VNAV NA below -11°C or above 47°C. For inoperative MALSR increase LPV visibility all Cats to 1 mile. Circling Rwy 3L, 12, 30 NA at night. # Missed approach requires a minimum climb of 345 feet per NM to 7300. | | | | | | |
| ATIS | PHOENIX APP CON | PRESCOTT TOWER * | GND CON | CLNC DEL | 128.75 (12-30) 125.3 (CTAF) (3R-21L) | UNICOM 122.95 |
| 127.2 | 133.575 281.55 | 125.3 (CTAF) 257.9 | 121.7 | 119.25 | | |



| | | | | | |
|-----------------------|--|--------------------------------|--------------------|----------------------|----------------------|
| ELEV 5045 D TDZE 4977 | | | | | |
| 5500 9100 DILLY | | ZIPAK 2.2 NM to RW21L | | | |
| *LNAV only. | | *1.5 NM to RW21L | | | |
| RW21L | | 5700* | | | |
| 1.5 0.7 6.9 NM 8.3 NM | | 7900 9100 7 NM Holding Pattern | | | |
| CATEGORY | | A B C D | | | |
| LPV DA | | # 5177-½ 200 (200-½) | | | |
| LPV DA | | 5277-½ 300 (300-½) | | | |
| LNAV/VNAV DA | | 5391-¾ 414 (400-¾) | | | |
| LNAV MDA | | 5480-½ 503 (500-½) | | 5480-1 503 (500-1) | |
| CIRCLING | | 5520-1 475 (500-1) | 5760-1 715 (800-1) | 6080-3 1035 (1100-3) | 6680-3 1635 (1700-3) |