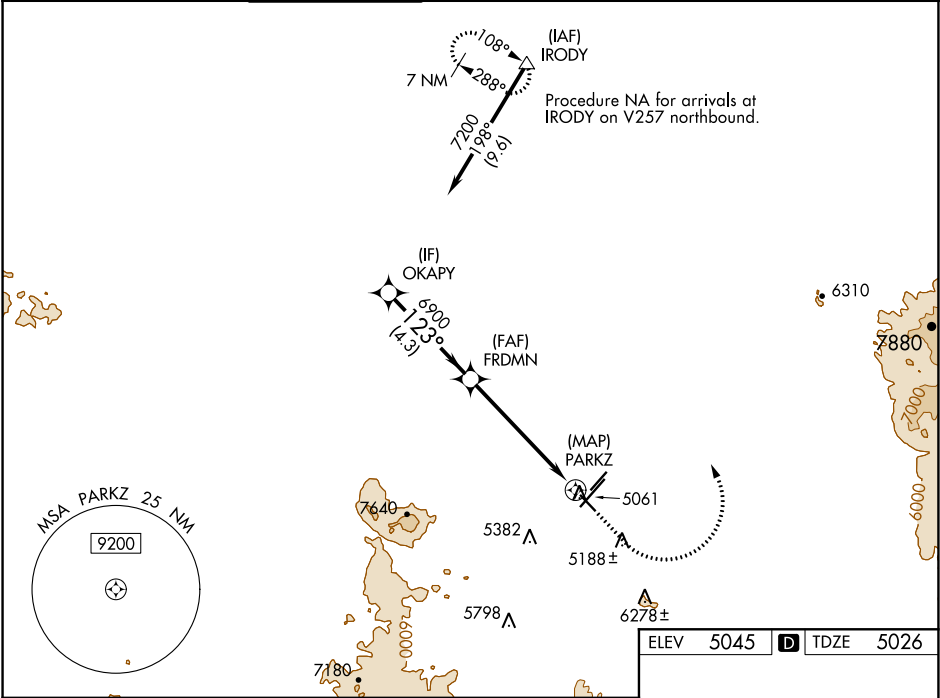


WAAS CH 49235 W12A	APP CRS 123°	Rwy Idg TDZE Apt Elev	4258 5026 5045
--	------------------------	-----------------------------	---

RNAV (GPS) RWY 12

PRESCOTT RGNL - ERNEST A LOVE FIELD (PRC)

RNP APCH.				MISSED APPROACH: Climb to 5500 then climbing left turn to 9000 direct IRODY and hold, continue climb-in-hold to 9000.			
For uncompensated Baro-VNAV systems, LNAV/VNAV NA below -11°C or above 49°C. Rwy 12 helicopter visibility reduction below 1 SM NA. Straight-in Rwy 12 NA at night, Circling Rwy 12, 3L, 30 NA at night.							
ATIS 127.2	PHOENIX APP CON 133.575 281.55	PRESCOTT TOWER ★ 125.3 (CTAF) 257.9	GND CON 121.7	CLNC DEL 119.25	128.75 (12-30) 125.3 (CTAF) (3R-21L)	UNICOM 122.95	



VGSi and RNAV glidepath not coincident (VGSi Angle 4.24/TCH 52).					5500 ↑		9000 ↖		IROYD △	
<p>OKAPY</p> <p>7200</p> <p>GP 3.00° TCH 48</p> <p>123°</p> <p>6900</p> <p>FRDMN 6900</p> <p>PARKZ</p> <p>4.3 NM</p> <p>5.5 NM</p> <p>0.3</p>					<p>123° to PARKZ</p>					
CATEGORY		A		B	C		D			
LPV DA		5276-1				250 (300-1)				
LNAV/ VNAV DA		5432-1 ³ / ₈				406 (400-1 ³ / ₈)				
LNAV MDA		5520-1		494 (500-1)		5520-1 ³ / ₈		494 (500-1 ³ / ₈)		
CIRCLING		5520-1 475 (500-1)		5760-1 715 (800-1)		6080-3 1035 (1100-3)		6680-3 1635 (1700-3)		

MIRL Rwy 3L-21R and 3R-21L
MIRL Rwy 12-30
REIL Rwy 3R, 12, and 30