

YUMA, ARIZONA

VOR/DME or TACAN RWY 17

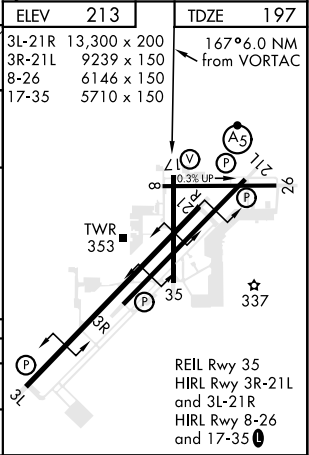
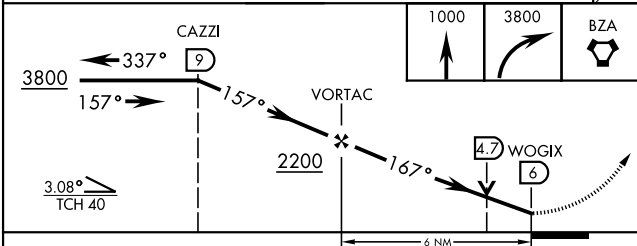
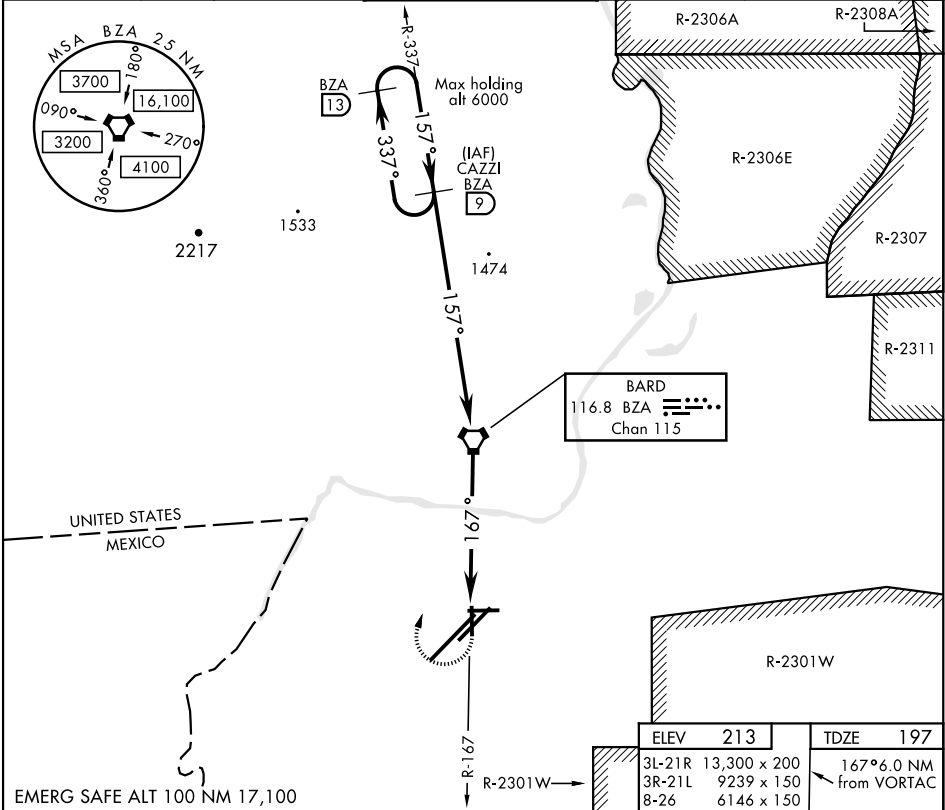
VORTAC BZA 116.8 Chan 115	APCH CRS 167°	Rwy Idg TDZE Arpt Elev 5710 197 213
---------------------------------	------------------	--

AL-511 [USN]

YUMA MCAS/YUMA INTL (KNYL)

	MISSED APPROACH: Climb to 1000, then climbing right turn to 3800 direct BZA VORTAC and BZA R-337 to CAZZI and hold.
---	---

ATIS★ 118.8 273.5	ASOS 256.4	YUMA APP CON 124.7 371.975	YUMA TOWER★ 119.3 (CTAF) 0 377.075	GND CON 121.9 314.0	CLNC DEL 118.0 336.4	ASR/ PAR
----------------------	---------------	-------------------------------	---------------------------------------	------------------------	-------------------------	-------------



CATEGORY	A	B	C	D
S-17	660-1 463 (500-1)	660-1½ 463 (500-1½)		
CIRCLING	680-1 467 (500-1)	700-1 487 (500-1)	800-1½ 587 (600-1½)	800-2 587 (600-2)

YUMA, ARIZONA  
Amdt 4 24MAY18

32°39'N-114°36'W

YUMA MCAS/YUMA INTL (KNYL)

VOR/DME or TACAN RWY 17

SW-4, 31 DEC 2020 to 28 JAN 2021

SW-4, 31 DEC 2020 to 28 JAN 2021