

YUMA, ARIZONA

TACAN RWY 3L

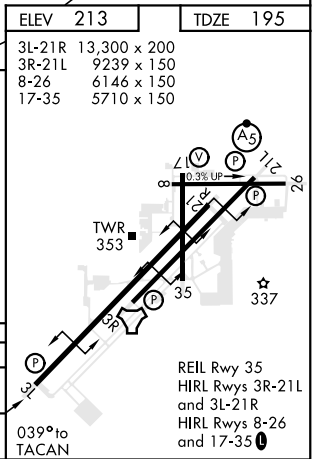
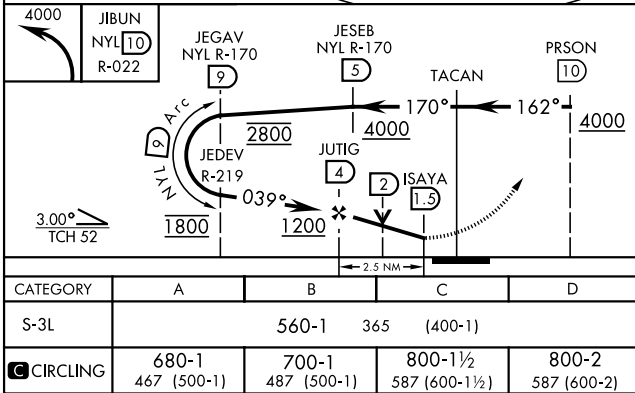
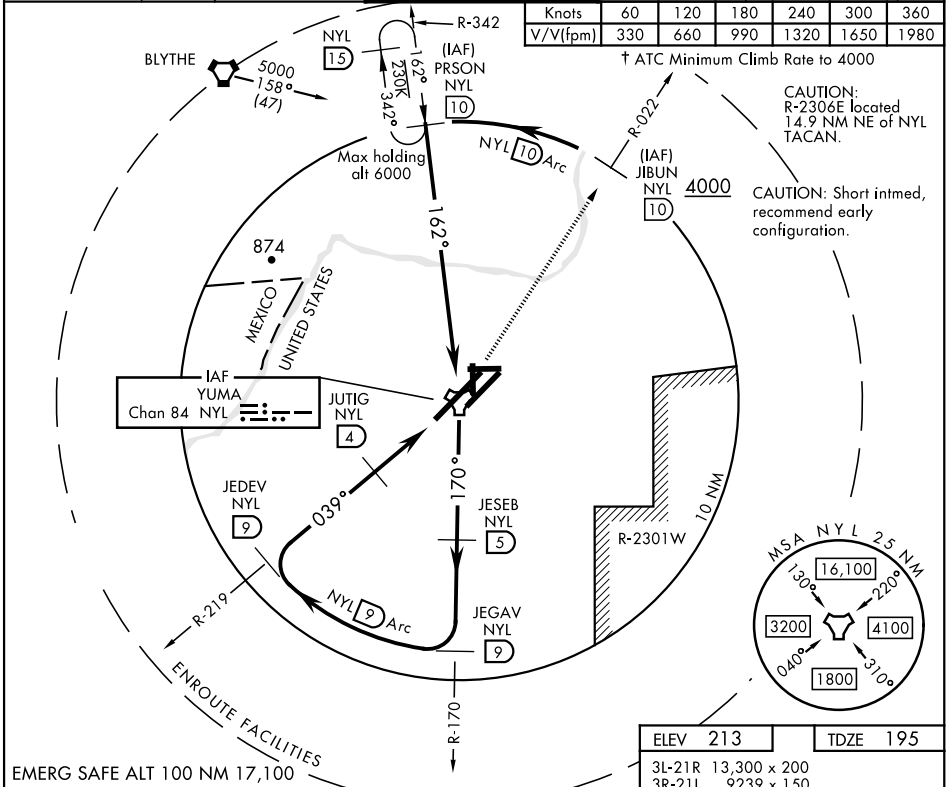
TACAN NYL Chan 84	APCH CRS 039°	Rwy Ldg 13,300 TDZE 195 Arpt Elev 213
-----------------------------	-------------------------	--

AL-511 [USN]

YUMA MCAS/YUMA INTL (KNYL)

† MISSED APPROACH: Climbing left turn to 4000, intercept NYL TACAN R-022 to JIBUN, cross JIBUN at or above 4000.

ATIS★ 118.8 273.5	ASOS 256.4	YUMA APP CON 124.7 371.975	YUMA TOWER★ 119.3 (CTAF) 0 377.075	GND CON 121.9 314.0	CLNC DEL 118.0 336.4	ASR/ PAR
-----------------------------	----------------------	--------------------------------------	--	-------------------------------	--------------------------------	-------------



YUMA, ARIZONA
Amdt 4 24MAY18

32°39'N-114°36'W

YUMA MCAS/YUMA INTL (KNYL)

TACAN RWY 3L

SW-4, 31 DEC 2020 to 28 JAN 2021

SW-4, 31 DEC 2020 to 28 JAN 2021