


YUMA, ARIZONA

RNAV (GPS) RWY 17

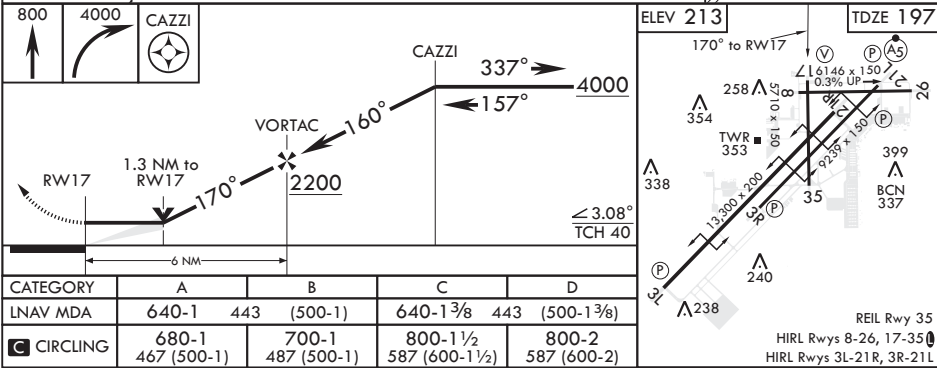
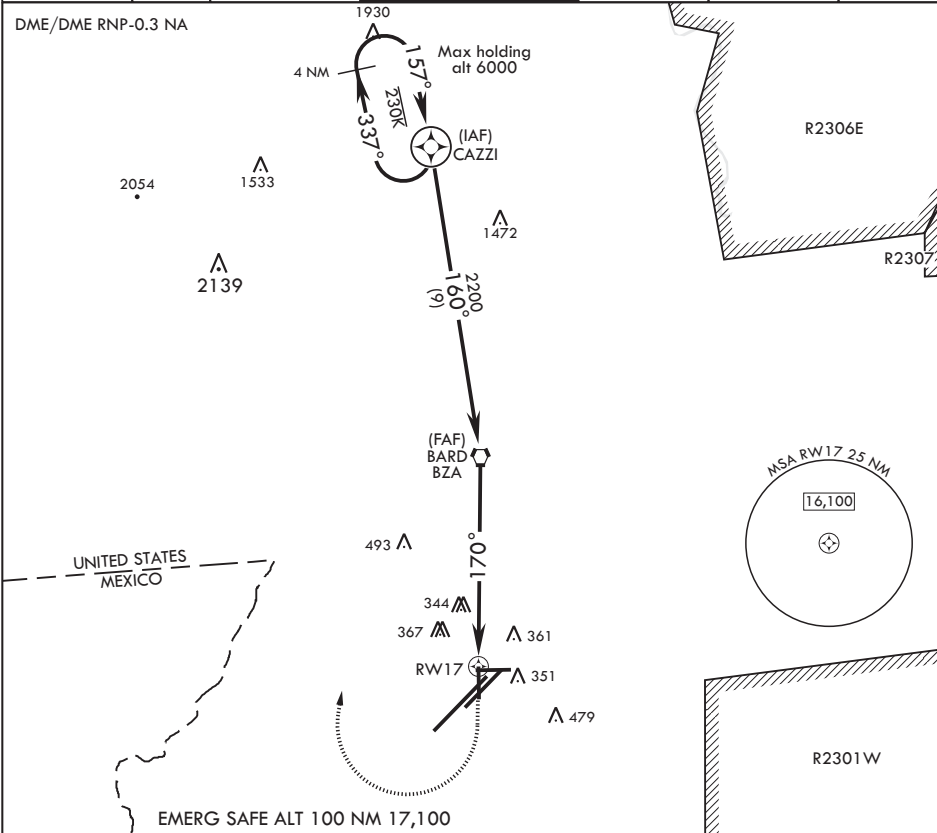
APCH CRS	Rwy Idg	5710
170°	TDZE	197
	Arprt Elev	213

AL-511 (USN)

YUMA MCAS YUMA INTL (KNYL)

	MISSED APPROACH: Climb to 800 then, climbing right turn to 4000 direct CAZZI and hold. Continue climb in hold to 4000.
---	--

ATIS★ 118.8 273.5	ASOS 256.4	APP CON 124.7 371.975	TOWER★ 119.3 (CTAF) 377.075	GND CON 121.9 314.0	CLNC DEL 118.0 336.4	ASR/PAR
----------------------	---------------	--------------------------	--------------------------------	------------------------	-------------------------	---------



SW-4, 31 DEC 2020 to 28 JAN 2021

SW-4, 31 DEC 2020 to 28 JAN 2021