

(ZIONZ1.ZIONZ) 19283

ZIONZ ONE DEPARTURE (RNAV)

AL-365 (FAA)

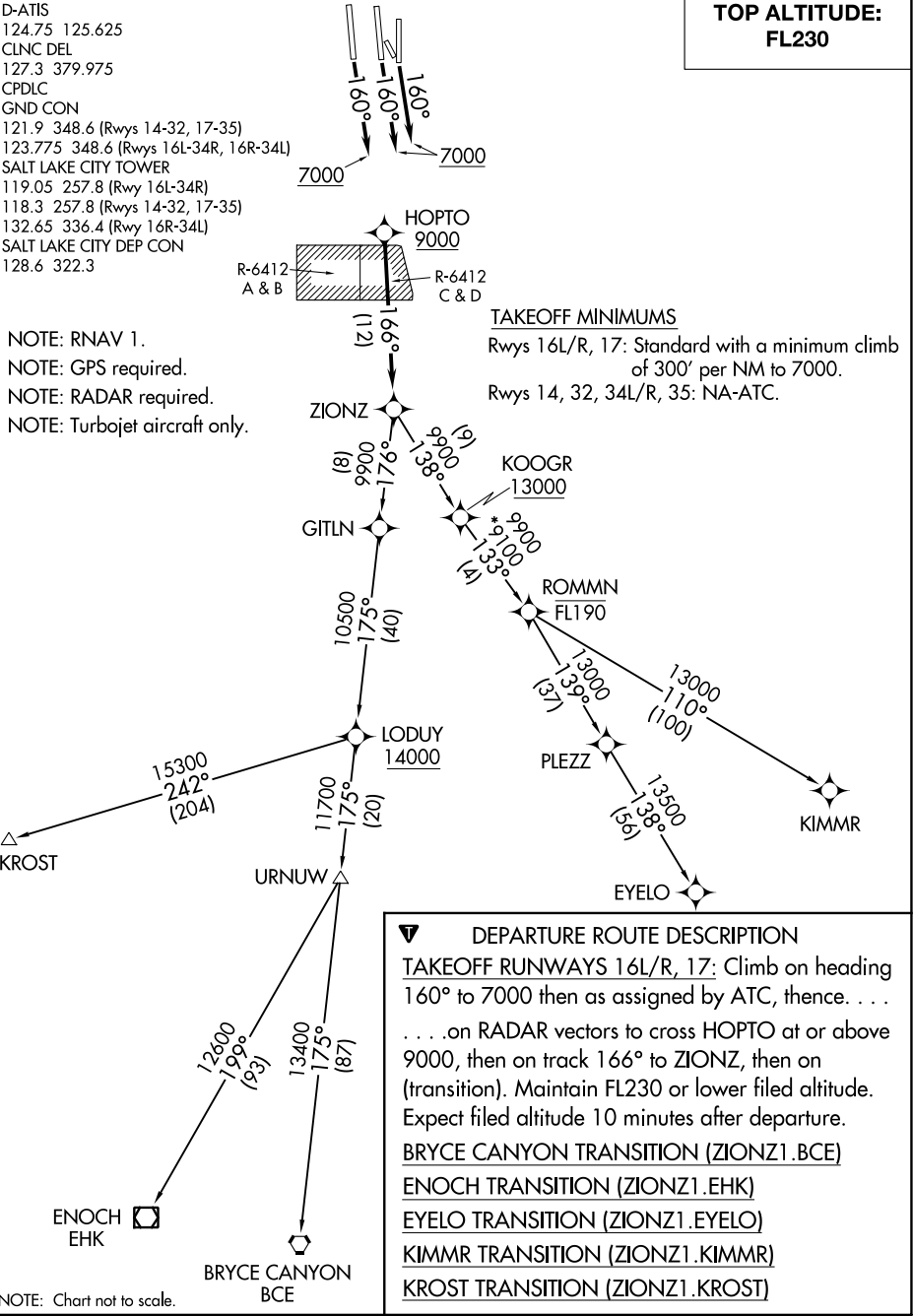
SALT LAKE CITY INTL (SLC)  
SALT LAKE CITY, UTAH

D-ATIS  
124.75 125.625  
CLNC DEL  
127.3 379.975  
CPDLC  
GND CON  
121.9 348.6 (Rwys 14-32, 17-35)  
123.775 348.6 (Rwys 16L-34R, 16R-34L)  
SALT LAKE CITY TOWER  
119.05 257.8 (Rwy 16L-34R)  
118.3 257.8 (Rwys 14-32, 17-35)  
132.65 336.4 (Rwy 16R-34L)  
SALT LAKE CITY DEP CON  
128.6 322.3

TOP ALTITUDE:  
FL230

NOTE: RNAV 1.  
NOTE: GPS required.  
NOTE: RADAR required.  
NOTE: Turbopjet aircraft only.

TAKEOFF MINIMUMS  
Rwys 16L/R, 17: Standard with a minimum climb  
of 300' per NM to 7000.  
Rwys 14, 32, 34L/R, 35: NA-ATC.



NOTE: Chart not to scale.

ZIONZ ONE DEPARTURE (RNAV)

(ZIONZ1.ZIONZ) 24MAY18

SALT LAKE CITY, UTAH  
SALT LAKE CITY INTL (SLC)

SW-4, 31 DEC 2020 to 28 JAN 2021

SW-4, 31 DEC 2020 to 28 JAN 2021