

WAAS CH 49230 W34A	APP CRS 344°	Rwy ldg TDZE Apt Elev	12002 4222 4227
--	------------------------	-----------------------------	--

RNAV (GPS) RWY 34R

SALT LAKE CITY INTL (SLC)

⚠

NA

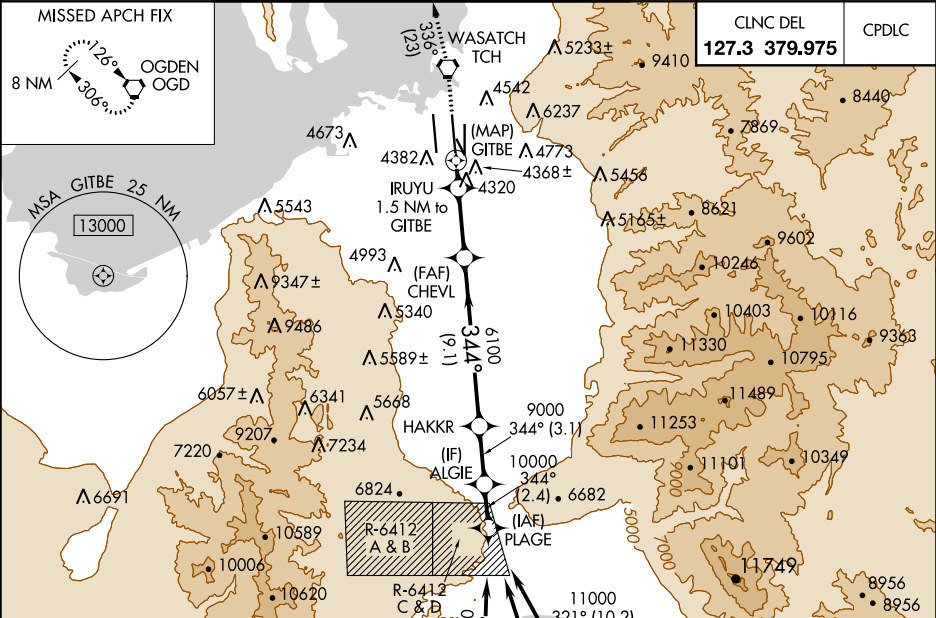
Simultaneous approach authorized. DME/DME RNP-0.3 NA. Use of FD or AP providing RNAV track guidance required during simultaneous operations. LNAV procedure NA during simultaneous operations. For uncompensated Baro-VNAV systems, LNAV/VNAV NA below -17°C (1°F) or above 49°C (121°F). For inop ALS, increase LPV Cat E visibility to ¾, LNAV/VNAV Cat E visibility to 1¾ and LNAV Cats C/D/E to 1¾ SM.

ALS-F-2

MISSSED APPROACH:

Climb to 9000 direct TCH VORTAC and on track 336° to OGD VORTAC and hold.

D-ATIS 124.75	SALT LAKE CITY APP CON 125.7 284.6	SALT LAKE CITY TOWER			GND CON	
		119.05 257.8 (Rwy 16L-34R)	118.3 257.8 (Rwys 14-32, 17-35)	132.65 336.4 (Rwy 16R-34L)	121.9 348.6 (Rwys 14-32, 17-35)	123.775 348.6 (Rwy 16L-34R, 16R-34L)



ELEV 4227

TDZE 4222

HIRL all Rwys

TDZ/CL Rwys 16L, 16R, 17, 35, 34L, and 34R

9000 TCH

tr 336°

OGD

VGSI and RNAV glidepath not coincident (VGSI Angle 3.00/TCH 73).

ALGIE

PLAGE

*LNAV only.

IRUYU 1.5 NM to GITBE

*0.8 NM to GITBE

GITBE

CHEVL

HAUKR

6100

9000

10000

GP 3.00°

TCH 53

0.4

0.8

0.7 NM

3.8 NM

9.1 NM

3.1 NM

2.4 NM

CATEGORY	A	B	C	D	E
LPV DA	4422/18 200 (200-½)				
LNAV/VNAV DA	4735/60 513 (600-1¼)				
LNAV MDA	4700/24	478 (500-½)	4700/50 478 (500-1)		

34L

34R

35

344° to RWY34R