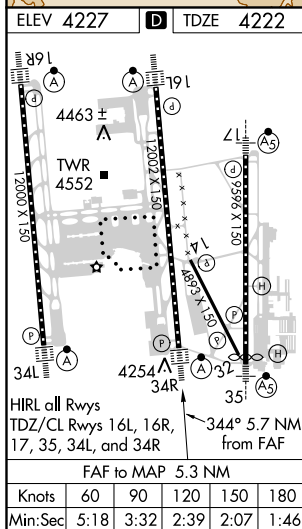


ILS or LOC RWY 34R
SALT LAKE CITY INTL (SLC)

MISSED APPROACH: Climb to 9000 direct TCH VORTAC and on TCH VORTAC R-331 to OGD VORTAC and hold.

MISSED APCH FIX	OGDEN	WASATCH 116.8 TCH	CLNC DEL 127.3 379.975	CPDLC
-----------------	-------	----------------------	---------------------------	-------



9000 ↑ TCH R-331 OGD	VGS1 and ILS glidepath not coincident (VGS1 Angle 3.00/TCH 73).				PLAGE I-SLC 20.2 ALGIE I-SLC 17.8 RADAR	
*LOC only I-SLC DME ANT.	*I-SLC GITBE I-SLC 0.3	IRUYU I-SLC 1.1 RADAR	CHEVL I-SLC 5.6 RADAR	HAKKR I-SLC 14.7 RADAR	9000	11000
<p>IM</p> <p>344°</p> <p>9000</p> <p>10000</p> <p>GS 3.00° TCH 53</p> <p>0.1 0.4 0.8 NM 0.7 3.8 NM 9.1 NM 3.1 NM 2.4 NM</p>						
CATEGORY	A		B		C	D
S-ILS 34R			4422/18		200 (200-½)	
S-LOC 34R			4700/24		478 (500-½)	

SW-4, 31 DEC 2020 to 28 JAN 2021