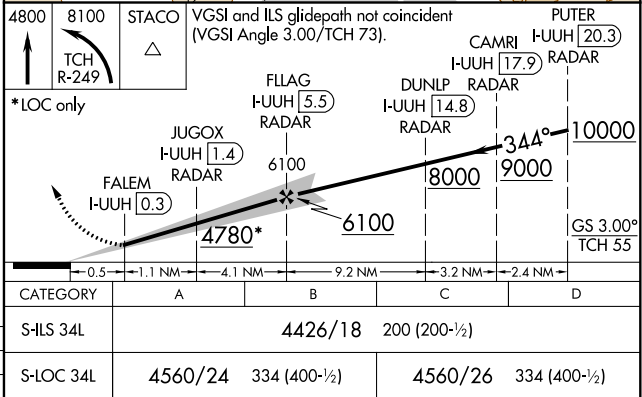
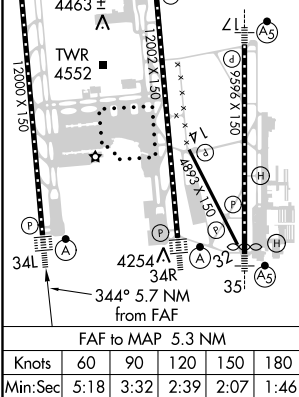
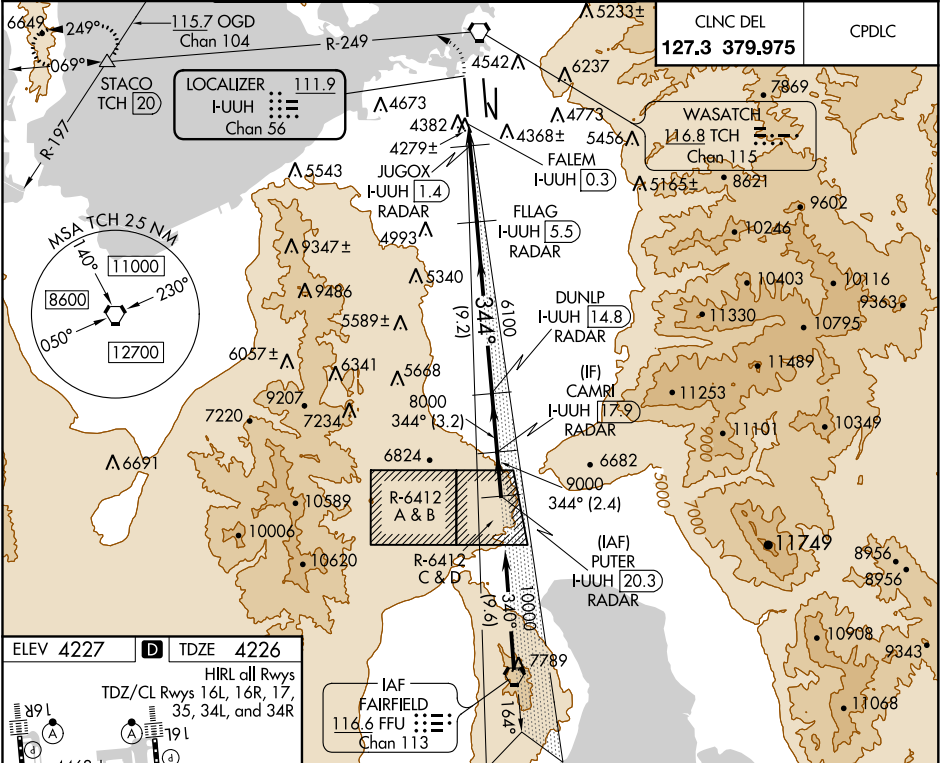


LOC/DME I-UUH 111.9 Chan 56	APP CRS 344°	Rwy Idg TDZE Apt Elev	12000 4226 4227
--	------------------------	-----------------------------	--

ILS or LOC RWY 34L
SALT LAKE CITY INTL (SLC)

RADAR required for arrivals at PUTER. DME or RADAR required.		ALSIF-2	MISSED APPROACH: Climb to 4800 then climbing left turn to 8100 on TCH VORTAC R-249 to STACO INT/TCH 20 DME and hold.
Simultaneous approach authorized.			

D-ATIS 124.75 125.625	SALT LAKE CITY APP CON 125.7 284.6	SALT LAKE CITY TOWER 119.05 257.8 118.3 257.8 132.65 336.4 (Rwy 16L-34R) (Rwys 14-32, 17-35) (Rwy 16R-34L)			GND CON 121.9 348.6 123.775 348.6 (Rwys 14-32, 17-35) (Rwys 16L-34R, 16R-34L)
---	--	--	--	--	---



SW-4, 31 DEC 2020 to 28 JAN 2021

SW-4, 31 DEC 2020 to 28 JAN 2021