

LOC/DME I-UUH 111.9 Chan 56	APP CRS 344°	Rwy Idg 12000 TDZE 4226 Apt Elev 4227
---	------------------------	--

ILS RWY 34L (SA CAT I)
SALT LAKE CITY INTL (SLC)

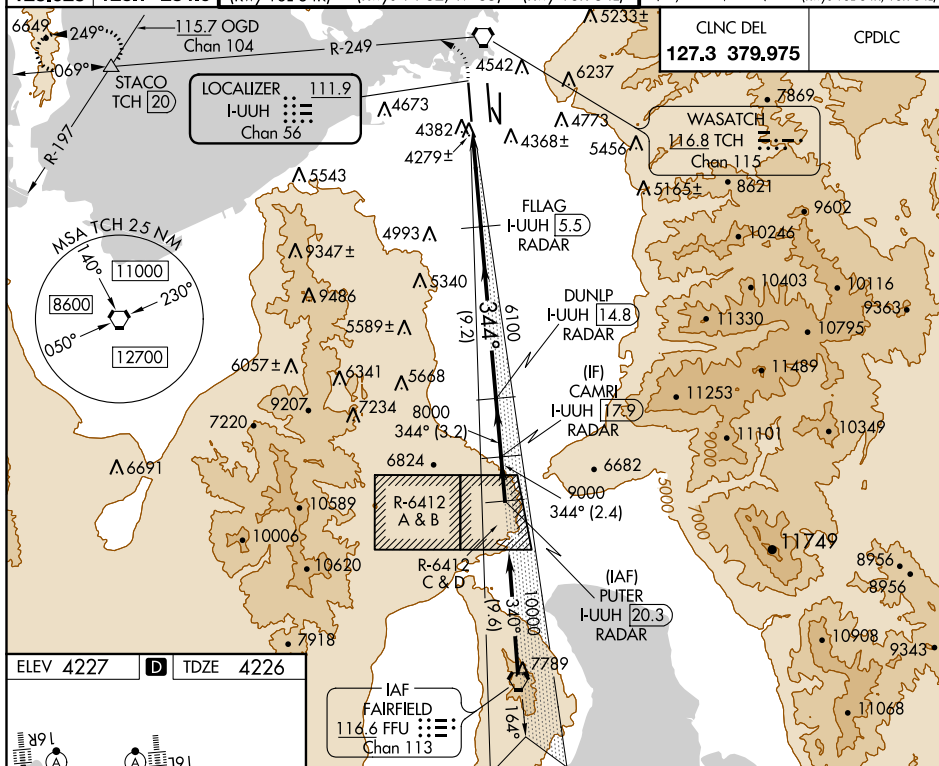
RADAR required for arrivals at PUTER. DME or RADAR required.

T Simultaneous approach authorized. Requires specific OPSPEC, MSPEC, or LOA approval and use of HUD to DH.

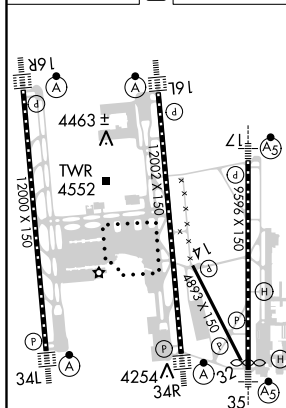
AISC-2

MISSED APPROACH: Climb to 4800 then climbing left turn to 8100 on TCH VORTAC R-249 to STACO INT/TCH 20 DME and hold.

D-ATIS	SALT LAKE CITY	SALT LAKE CITY TOWER			GND CON	
124.75	APP CON	119.05 257.8	118.3 257.8	132.65 336.4	121.9 348.6	123.775 348.6
125.625	125.7 284.6	(Rwy 16L-34R)	(Rwys 14-32, 17-35)	(Rwy 16R-34L)	(Rwys 14-32, 17-35)	(Rwys 16L-34R, 16R-34L)



ELEV 4227	D	TDZE 4226
-----------	----------	-----------



HIRL all Rwy's
TDZ/CL Rwy's 16L, 16R,
17, 35, 34L, and 34R

4800 ↑ TCH R-249	8100 △	VGSI and ILS glidepath not coincident (VGSI Angle 3.00°/TCH 73).	PUTER I-UUH [20.3] RADAR
	FLLAG I-UUH [5.5] RADAR	DUNLP I-UUH [14.8] RADAR	CAMRI I-UUH [17.9] RADAR
	6100	8000	9000
	6100		344°
			10000
			GS 3.00° TCH 55

	105	3.7 NM	9.2 NM	3.2 NM	2.4 NM
CATEGORY	A	B	C	D	
S-ILS 34L	RA 158/14 150 DA 4376				

SA CATEGORY I ILS - SPECIAL AIRCREW
& AIRCRAFT CERTIFICATION REQUIRED