

ILS RWY 17 (SA CAT I & II)  
SALT LAKE CITY INTL (SLC)

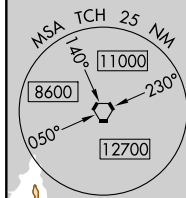
MALSR

**MISSED APPROACH:** Climb to 5800 then climbing left turn to 10000 direct FFU VORTAC and hold.

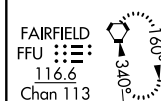
CLNC DEL	CPDLC
<b>127.3 379.975</b>	

IAF  
OGDEN  
115.7 OGD  
Chan 104

Procedure NA for arrival on OGD VORTAC  
airway radials 068 CW 153.

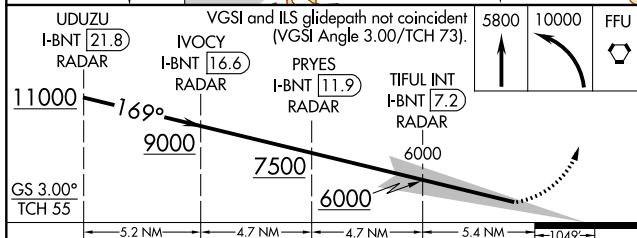


MISSED APCH FIX



WASATCH  
116.8 TCH  
Chan 115

LOCALIZER 111.5  
I-BNT  
Chn 52



CATEGORY	A	B	C	D
S-ILS 17	SA CAT I	RA 149/14	150	DA 4369
S-ILS 17	SA CAT II	RA 99/12	100	DA 4319

SA CATEGORY I & II ILS - SPECIAL AIRCREW  
& AIRCRAFT CERTIFICATION REQUIRED

