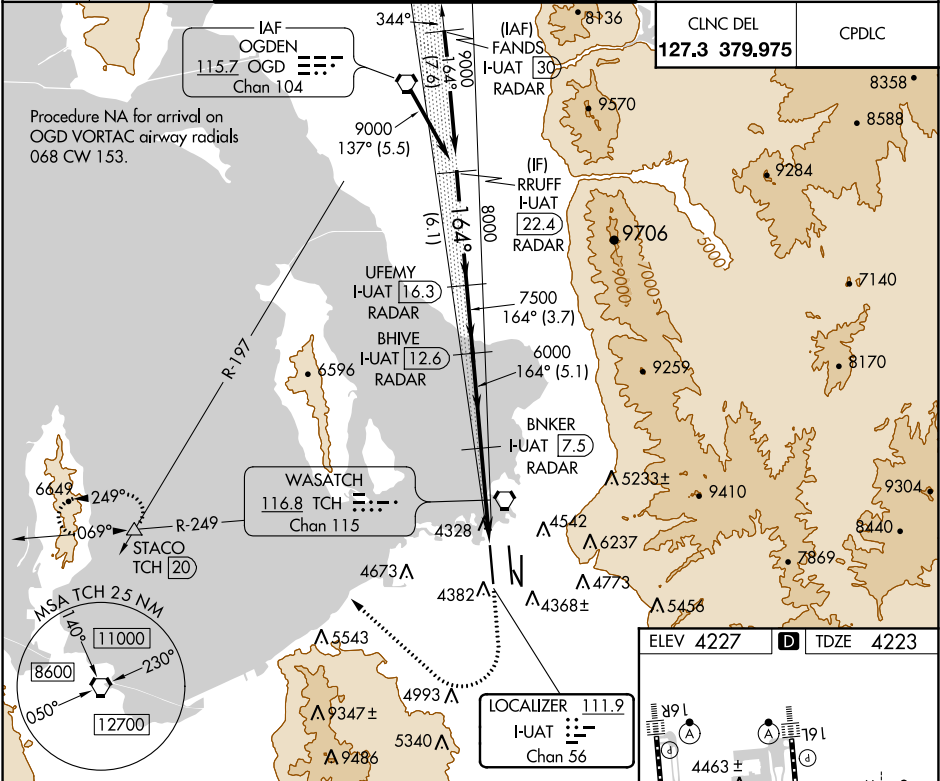


LOC/DME I-UAT 111.9 Chan 56	APP CRS 164°	Rwy ldg 12000 TDZE 4223 Apt Elev 4227
---	------------------------	--

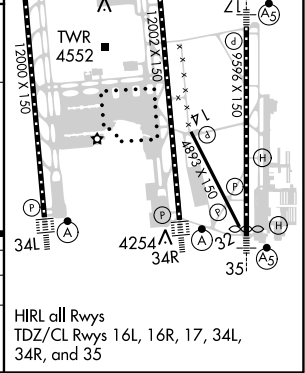
ILS RWY 16R (SA CAT I)
SALT LAKE CITY INTL (SLC)

DME or RADAR required.	ALSIF-2	MISSED APPROACH: Climb to 4800 then climbing right turn to 8100 on heading 300° and on TCH VORTAC R-249 to STACO INT/TCH 20 DME and hold.
Simultaneous approach authorized. Requires specific OPSPEC, MSPEC, or LOA approval and use of HUD to DH.		

D-ATIS 124.75 125.625	SALT LAKE CITY APP CON 125.7 284.6	SALT LAKE CITY TOWER 119.05 257.8 (Rwy 16L-34R)	118.3 257.8 (Rwys 14-32, 17-35)	132.65 336.4 (Rwy 16R-34L)	GND CON 121.9 348.6 (Rwys 14-32, 17-35)	123.775 348.6 (Rwys 16L-34R, 16R-34L)
---	---	--	---	--------------------------------------	--	---



RRUFF I-UAT 22.4	UFEMY I-UAT 16.3	BHIVE I-UAT 12.6	BNKER I-UAT 7.5	STACO TCH 20
9000	8000	7500	6000	5233±
6.1 NM	3.7 NM	5.1 NM	5.3 NM	1051'
CATEGORY A	B	C	D	
S-ILS 16R	RA 157/14	150	DA 4373	
SA CATEGORY I ILS - SPECIAL AIRCREW & AIRCRAFT CERTIFICATION REQUIRED				



SW-4, 31 DEC 2020 to 28 JAN 2021

SW-4, 31 DEC 2020 to 28 JAN 2021