

VORTAC FMG	APP CRS	Rwy Idg	N/A
117.9	239°	TDZE	N/A
Chan 126		Apt Elev	4415

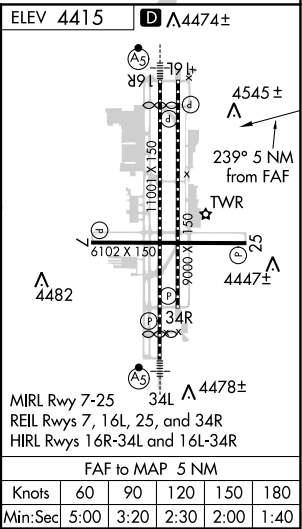
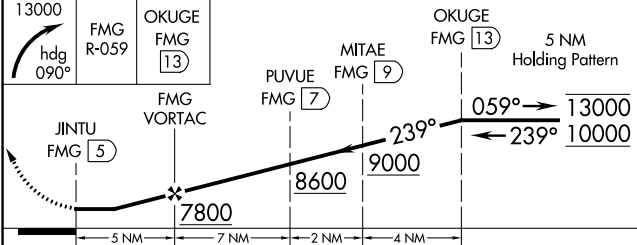
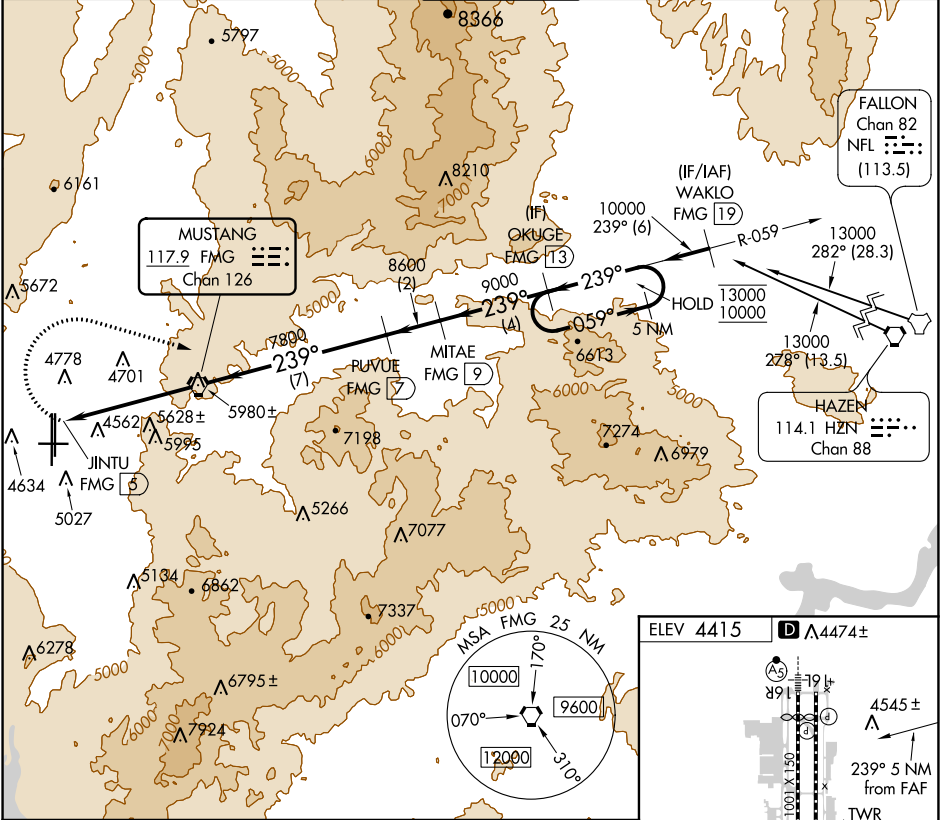
TACAN-F

RENO/TAHOE INTL (RNO)

**⚠** Circling NA for Cat E south of Rwy 7 and west of 34L.  
**⚠** Circling Rwy 7 NA at night. Approaches RADAR monitored by NORCAL APP CON. Arrivals from east and aircraft on missed approach may be vectored to final.  
**⚠** Circling NA for Cat E to Rwy 7 and 25.  
**⚠** -15°C

**MISSED APPROACH:** Climbing right turn to 13000 on heading 090° and FMG R-059 to OKUGE/13 DME and hold, continue climb-in-hold to 13000.

D-ATIS	NORCAL APP CON	RENO TOWER	GND CON	CLNC DEL	CPDLC
135.8 363.0	119.2 279.55 126.3 353.9	118.7 257.8	121.9 348.6	124.9 370.85	



CATEGORY	A	B	C	D	E	F
CIRCLING	5960-1¼ 1545 (1600-1¼)	5960-1½ 1545 (1600-1½)	6360-3 1945 (2000-3)	6440-3 2025 (2100-3)		
Knots	60	90	120	150	180	
Min:Sec	5:00	3:20	2:30	2:00	1:40	