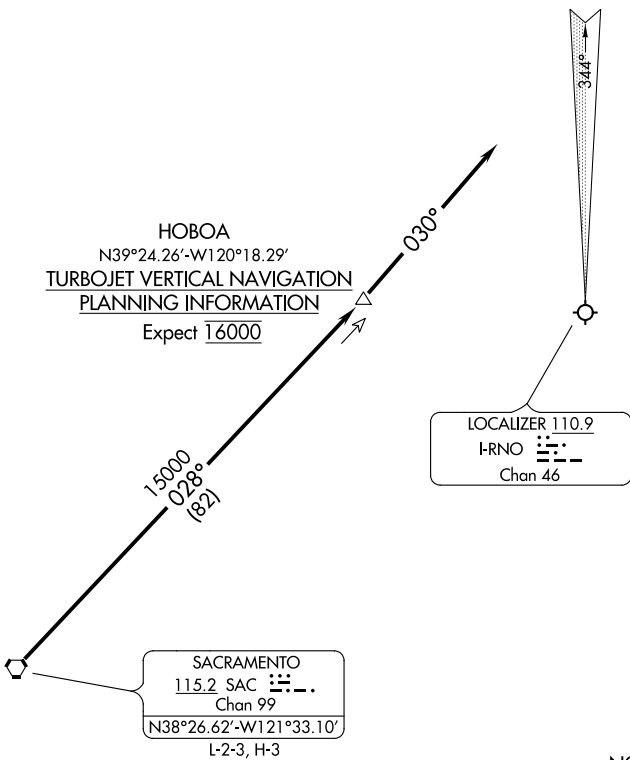


NORCAL APP CON
119.2 279.55
126.3 353.9
D-ATIS
135.8 363.0

CAUTION: Intense
Glider Activity up
to FL180.



ARRIVAL ROUTE DESCRIPTION

From over SAC VORTAC via SAC R-028 to HOBIA INT/SAC 82 DME. Depart HOBIA heading 030° for vectors to final approach.