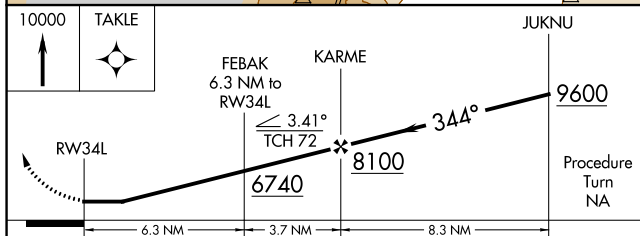
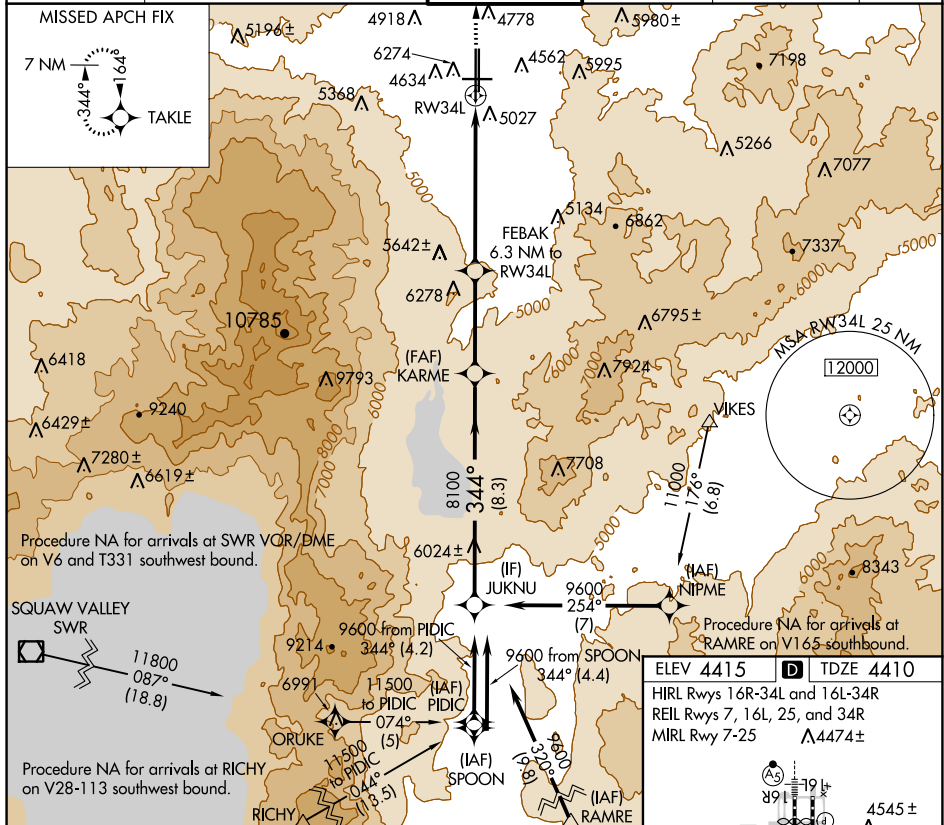


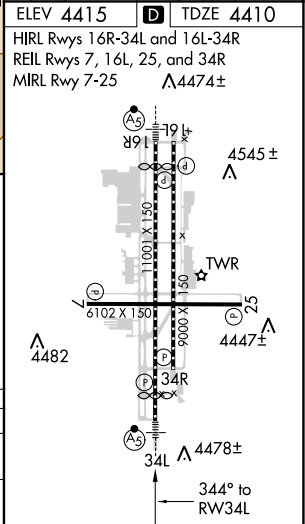
RNAV (GPS) X RWY 34L
RENO/TAHOE INTL (RNO)

MISSED APPROACH: Climb to 10000
direct TAKLE and hold, continue
climb-in-hold to 10000.

D-ATIS		NORCAL APP CON				RENO TOWER		GND CON		CLNC DEL		CPDLC
135.8	363.0	119.2	279.55	126.3	353.9	118.7	257.8	121.9	348.6	124.9	370.85	



CATEGORY	A	B	C	D
LNAV MDA	5300-1	890 (900-1)	5300-2½ 890 (900-2¼)	5300-2½ 890 (900-2½)
CIRCLING	5340-1¼	925 (1000-1¼)	5340-2¾ 925 (1000-2¾)	5340-3 925 (1000-3)



SW-4, 31 DEC 2020 to 28 JAN 2021