

RENO, NEVADA

AL-346 (FAA)

20086

WAAS CH <b>78309</b> <b>W16B</b>	APP CRS <b>164°</b>	Rwy Idg <b>10001</b> TDZE <b>4415</b> Apt Elev <b>4415</b>
--	------------------------	--

RNAV (GPS) X RWY 16R  
RENO/TAHOE INTL (RNO)

RNP APCH.



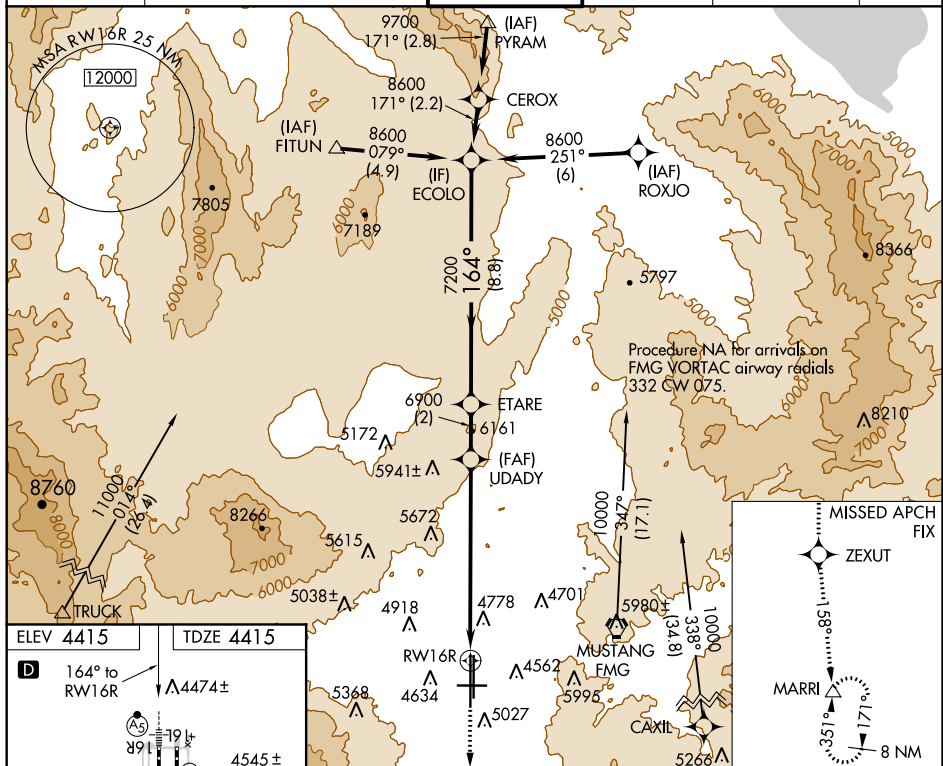
Inoperative table does not apply to LNAV all Cats.  
For inoperative MALSR increase LPV all Cats visibility to  $2\frac{3}{4}$ .

MALSR



**MISSED APPROACH:** Climb to 13000  
direct ZEXUT and on track 158° to  
MARRI and hold.

D-ATIS	NORCAL APP CON				RENO TOWER		GND CON		CLNC DEL		CPDLC
135.8 363.0	119.2	279.55	126.3	353.9	118.7	257.8	121.9	348.6	124.9	370.85	



MIRL Rwy 7-25  
REIL Rwys 7, 16L, 25, and 34R  
HIRL Rwys 16R-34L and 16L-34R

VGSi and descent angles not coincident (VGSi Angle 3.06/TCH 77).					13000 	ZEXUT 	tr 158°	MARRI 
CATEGORY	A		B	C		D		
LPV DA	5239-2¼ 824 (900-2¼)							
LNAB MDA	6200/60 1785 (1800-1¼)	6200-1½ 1785 (1800-1½)	6200-3 1785 (1800-3)					

RENO, NEVADA  
Amdt 1E 15AUG19

39°30'N-119°46'W

RENO/TAHOE INTL (RNO)

## RNAV (GPS) X RWY 16R

SW-4, 31 DEC 2020 to 28 JAN 2021