

APP CRS	Rwy Idg	10001
164°	TDZE	4415
	Apt Elev	4415

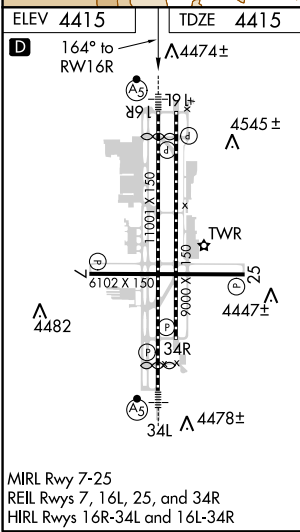
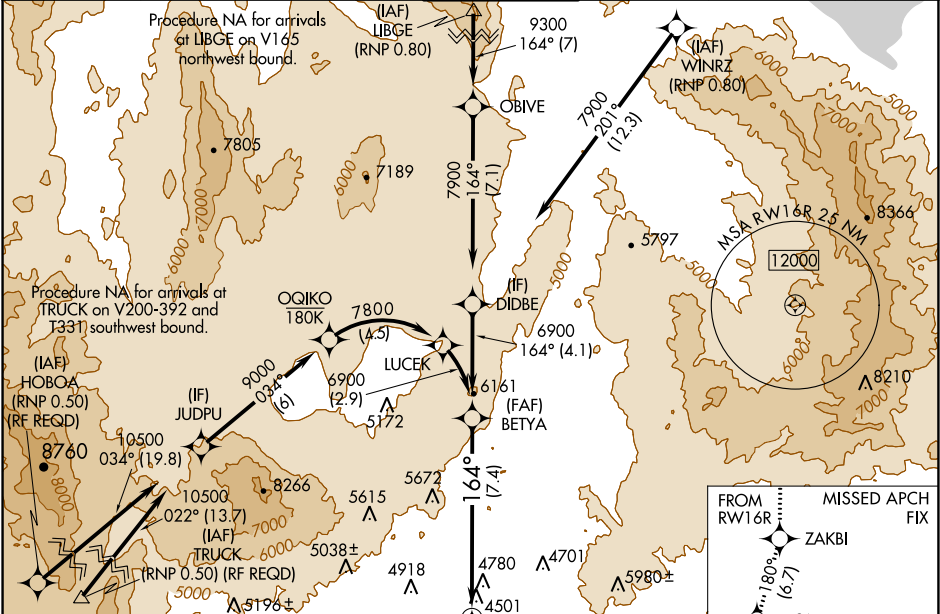
RNAV (RNP) Z RWY 16R

RENO/TAHOE INTL (RNO)

**V** For uncompensated Baro-VNAV systems, procedure NA below -16°C (4°F) or above 54°C (130°F). For inoperative MALSR, increase RNP 0.17 all Cats visibility to 1½ and RNP 0.30 all Cats visibility to 2½. GPS required. \*Missed approach requires a minimum climb of 260 feet per NM to 7000.

**MALSR** MISSED APPROACH: Climb to 13000 on track 164° to ZAKBI and on track 180° to USINE and on track 124° to YARKU and hold, continue climb-in-hold to 13000.

D-ATIS	NORCAL APP CON	RENO TOWER	GND CON	CLNC DEL	CPDLC
135.8 363.0	119.2 279.55 126.3 353.9	118.7 257.8	121.9 348.6	124.9 370.85	



BETYA

6900

6900

GP 3.10°

TCH 63

13000

ZAKBI

tr 164°

USINE

tr 180°

YARKU

tr 124°

See planview for multiple IF locations.

164°

RW16R

7.4 NM

CATEGORY	A	B	C	D
RNP 0.17 DA*	4973-138	558 (600-138)		NA
RNP 0.30 DA	5142-178	727 (800-178)		NA

AUTHORIZATION REQUIRED

SW-4, 31 DEC 2020 to 28 JAN 2021

SW-4, 31 DEC 2020 to 28 JAN 2021