

APP CRS <b>164°</b>	Rwy Idg <b>10001</b> TDZE <b>4415</b> Apt Elev <b>4415</b>
------------------------	--

RNAV (RNP) Y RWY 16R  
RENO/TAHOE INTL (RNO)

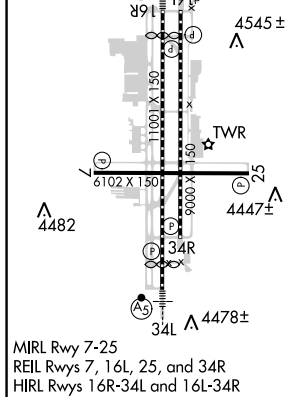
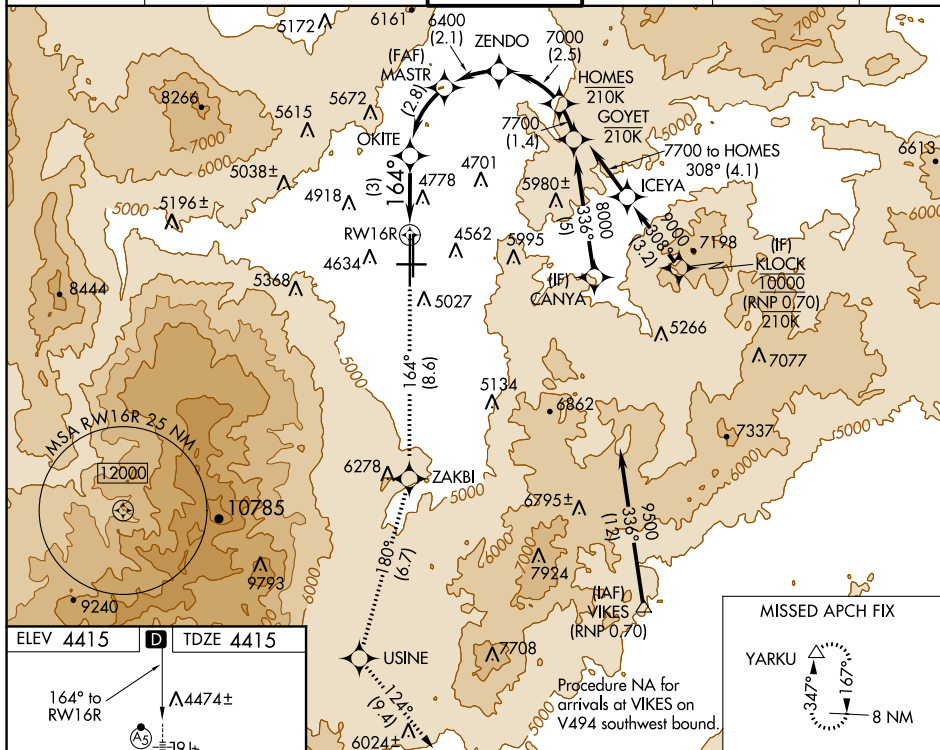
**T** For uncompensated Baro-VNAV systems, procedure NA below  
**A** -14°C (7°F) or above 36°C (98°F). For inoperative MALSR,  
**\*** -15°C increase RNP 0.17 all Cats visibility to 1¼ and RNP 0.30 all  
 Cats visibility to 2½. RF required. GPS required. \*Missed  
 approach requires a minimum climb of 260 feet per NM to 7000.

MAISR



**MISSED APPROACH:** Climb to 13000 on track 164° to ZAKBI and on track 180° to USINE and on track 124° to YARKU and hold, continue climb-in-hold to 13000.

D-ATIS	NORCAL APP CON				RENO TOWER	GND CON	CLNC DEL	CPDLC
135.8 363.0	119.2	279.55	126.3	353.9	118.7 257.8	121.9 348.6	124.9 370.85	



VGSi and RNAV glidepath not coincident (VGSi Angle 3.06/TCH 77).		13000 ↑ tr 164°		ZAKBI ✱		tr 180°		USINE ✱		tr 124°		YARKU △	
HOMES		ZENDO		MASTR		OKITE		See planview for multiple IF locations.					
7700		7000		6400		5465		RW16R					
GP 3.10° TCH 63		6400		164°									
		2.5 NM		2.1 NM		2.8 NM		3 NM					
CATEGORY		A		B		C		D					
RNP 0.17 DA*				4817/40		402 (500-¾)							
RNP 0.30 DA				5132-17 <sub>8</sub>		717 (800-1 <sub>5</sub> )							
AUTHORIZATION REQUIRED													

## RNAV (RNP) Y RWY 16R