

WAAS CH 70321 W26A	APP CRS 258°	Rwy Idg 11489 TDZE 1135 Apt Elev 1135
--	------------------------	--

RNAV (GPS) Y RWY 26
PHOENIX SKY HARBOR INTL (PHX)

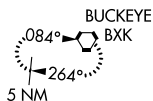
PHOENIX SKY HARBOR INTL (PHX)

T For uncompensated Baro-VNAV systems, LNAV/VNAV NA below -17°C (2°F) or **A** above 46°C (114°F). DME/DME RNP-0.3 NA. Simultaneous approach authorized with ILS or LOC Rwy 25L. Use of FD or AP providing RNAV track guidance required during simultaneous operations. LNAV procedure NA during simultaneous operations.

MISSED APPROACH:
Climb to 5000 direct OJGIL
and via 259° track to
BXK VORTAC and hold.

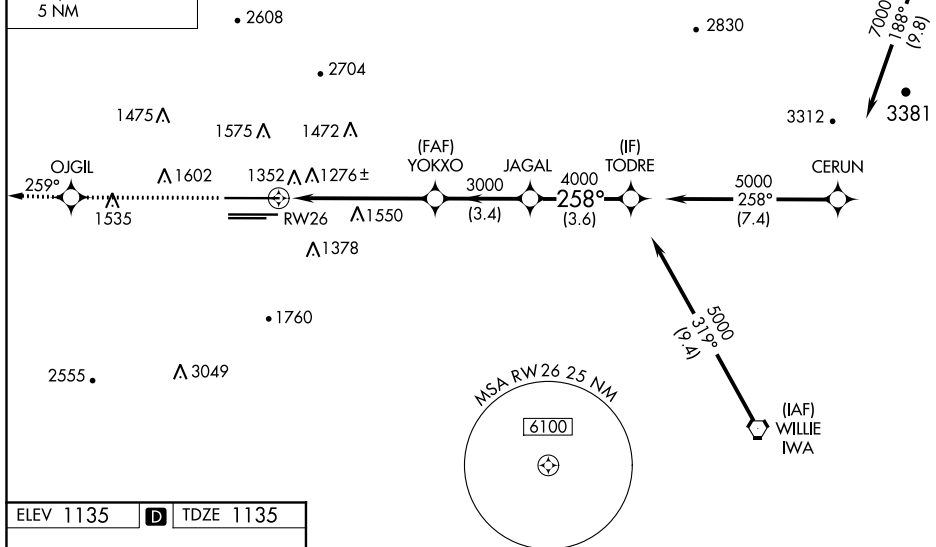
D-ATIS 127.575	PHOENIX APP CON 128.65 353.9	PHOENIX TOWER 118.7 278.8 (Rwy 8-26) 120.9 254.3 (Rwy 7L-25R, 7R-25L)	GND CON 119.75 269.2 (N) 132.55 269.2 (S)	CLNC DEL 118.1 269.2	CPDLC
--------------------------	--	---	---	--------------------------------	-------

MISSED APCH FIX

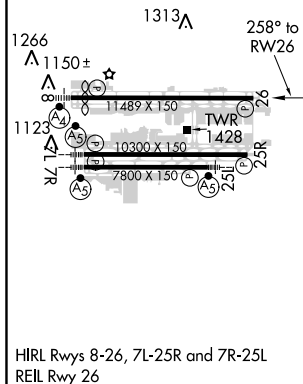


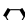
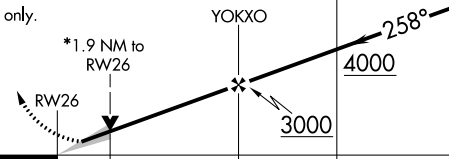
Procedure NA for arrivals at ZERLO
via V190 northeast bound.

(IAF)
ZERLO



ELEV 1135	D	TDZE 1135
-----------	----------	-----------



5000 ↑	OJGIL	tr 259°	BXK 	VGSIG and RNAV glidepath not coincident (VGSIG Angle 3.00/TCH 71).		TODRE
*LNAV only.				YOKXO	JAGAL	5000
				Procedure Turn NA		GP 3.00° TCH 54
CATEGORY	A	B	C	D		
LPV DA	1436-1 301 (400-1)					
LNAV/ VNAV DA	1659-1¾ 524 (600-1¾)					
LNAV MDA	1800-1 665 (700-1)			1800-1¾ 665 (700-1¾)		1800-2 665 (700-2)
C CIRCLING	1800-1 665 (700-1)			2040-2¾ 905 (1000-2¾)		2560-3 1425 (1500-3)