


APP CRS	Rwy Idg	10300
078°	TDZE	1116
	Apt Elev	1135

RNAV (RNP) Z RWY 7L
PHOENIX SKY HARBOR INTL (PHX)

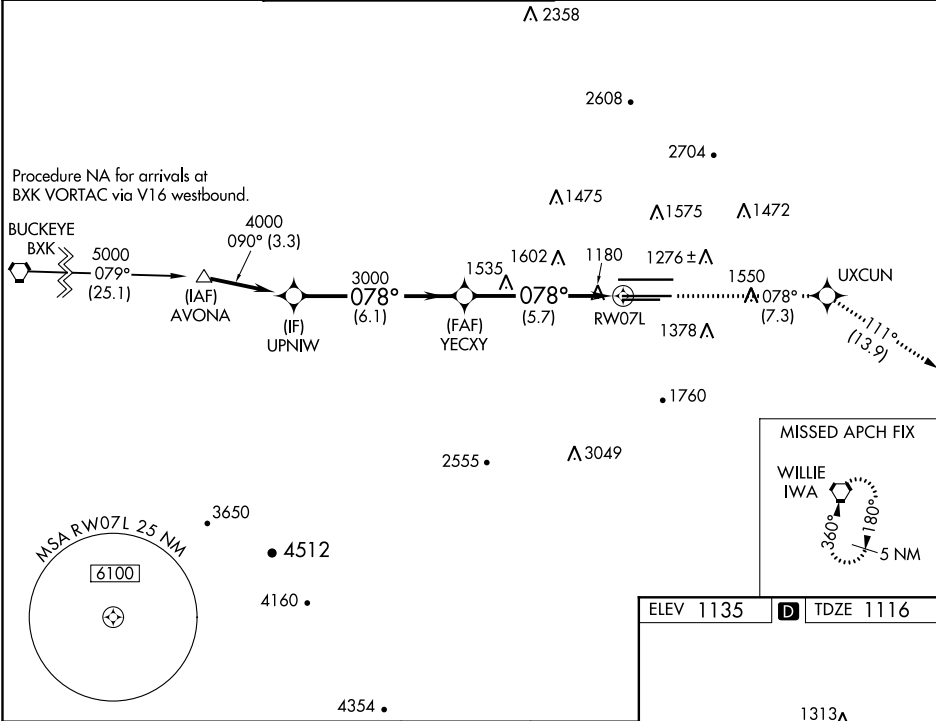
GPS required. Visibility reduction by helicopters NA. For uncompensated Baro-VNAV systems, procedure NA below 1°C (34°F) or above 46°C (116°F). For inoperative MALSR, increase RNP 0.30 all Cnts visibility to 1½ mile. Simultaneous approach authorized with ILS or LOC Rwy 8. Use of FD or AP providing RNAV track guidance required during simultaneous operations.

MALSR



MISSED APPROACH:
Climb to 5000 via track 078° to UXCUN and via track 111° to IWA VORTAC and hold.

D-ATIS	PHOENIX APP CON	PHOENIX TOWER	GND CON	CLNC DEL	CPDLC
127.575	128.65 353.9	118.7 278.8 (Rwy 8-26) 120.9 254.3 (Rwy 7L-25R, 7R-25L)	119.75 269.2 (N) 132.55 269.2 (S)	118.1 269.2	



Procedure Turn NA

VGSI and RNAV glidepath not coincident (VGSI Angle 3.00/TCH 73).

UPNIW

4000

078°

3000

YECXY

3000

RW07L

GP 3.00° TCH 57

6.1 NM

5.7 NM

CATEGORY	A	B	C	D
RNP 0.30 DA	1523/50 407 (400-1)			

AUTHORIZATION REQUIRED

ELEV 1135

TDZE 1116

1313A

1266

1150±

1123

11489 X 150

10300 X 150

7800 X 150

1428

1258

078° to RW07L

HIRL Rwys 8-26, 7L-25R and 7R-25L

REIL Rwy 26

SW-4, 31 DEC 2020 to 28 JAN 2021

SW-4, 31 DEC 2020 to 28 JAN 2021