

JESSE TWO ARRIVAL

AL-322 (FAA)

PHOENIX SKY HARBOR INTL (PHX)

PHOENIX, ARIZONA

PHOENIX APP CON

128.65 353.9

PHOENIX TOWER

118.7 278.8 (Rwy 8-26)

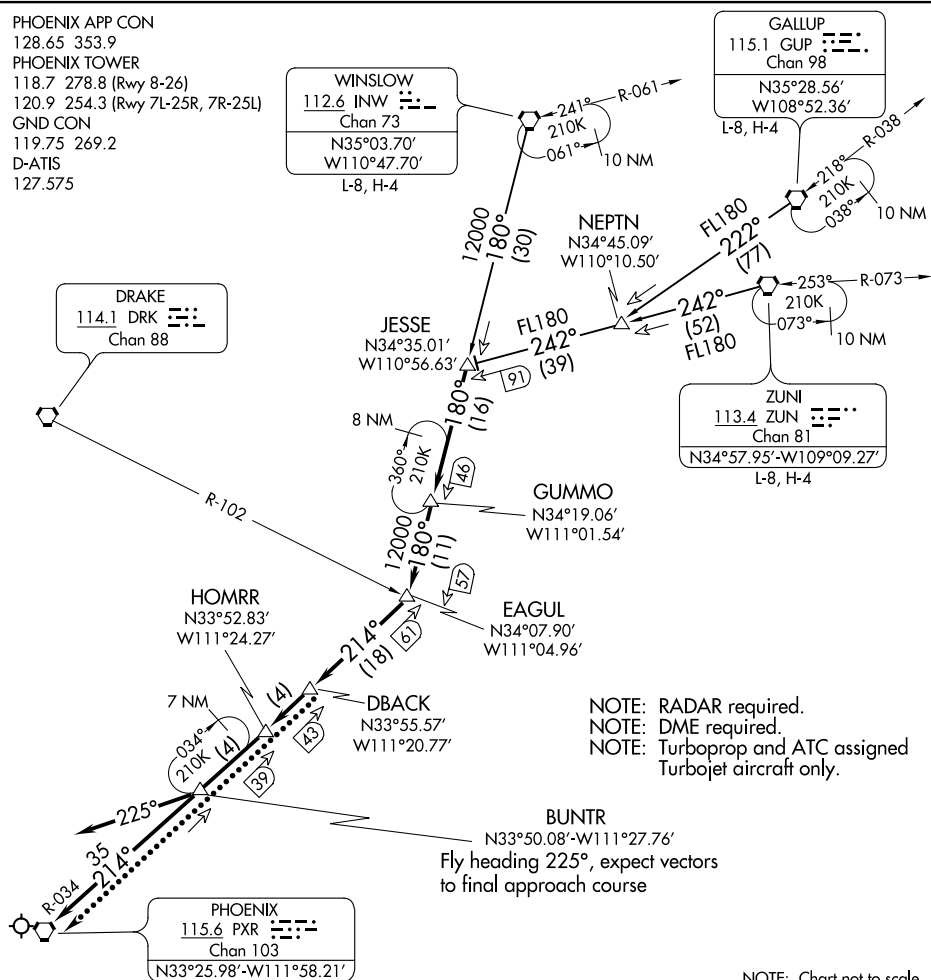
120.9 254.3 (R_{wv} 7L-25R, 7R-25L)

GND CON

119.75 269.2

D-ATIS

127.575



NOTE: Chart not to scale.

ARRIVAL ROUTE DESCRIPTION

GALLUP TRANSITION (GUP.JESSE2): From over GUP VORTAC on GUP R-222 and ZUN R-242 to JESSE INT. Thence. . . .

WINSLOW TRANSITION (INW.JESSE2): From over INW VORTAC on INW R-180 to JESSE INT. Thence. . .

ZUNI TRANSITION (ZUN.JESSE2): From over ZUN VORTAC on ZUN R-242 to JESSE INT.
Thence. . . .

...From over JESSE on INW R-180 to GUMMO, then on INW R-180 to EAGUL, then on PXR R-034 to DBACK, then on PXR R-034 to HOMRR, then on PXR R-034 to PXR VORTAC.

LOST COMMUNICATIONS

After DBACK, proceed direct to PXR VORTAC.

JESSE TWO ARRIVAL

(JESSE.JESSE2) 27APR17

PHOENIX, ARIZONA

PHOENIX SKY HARBOR INTL (PHX)

SW-4, 31 DEC 2020 to 28 JAN 2021

SW-4, 31 DEC 2020 to 28 JAN 2021