

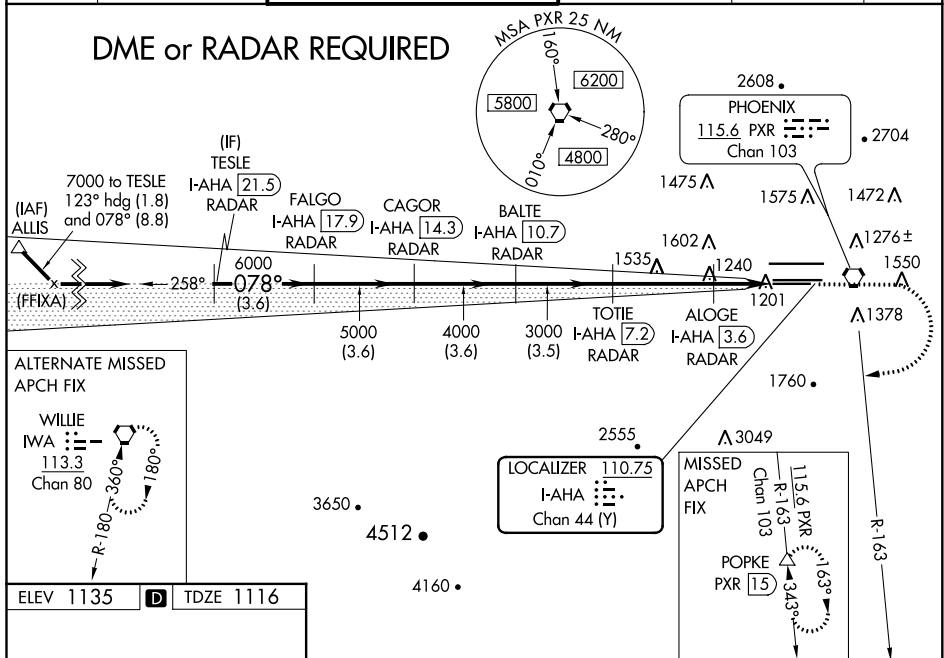
ILS or LOC RWY 7R  
PHOENIX SKY HARBOR INTL (PHX)

MALSR

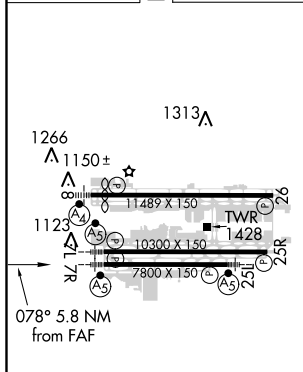
**MISSED APPROACH:** Climb to 3300 then climbing right turn to 5000 on heading 250° and PXR VORTAC R-163 to POPKE/PXR 15 DME and hold.

D-ATIS <b>127.575</b>	PHOENIX APP CON <b>128.65 353.9</b>	PHOENIX TOWER <b>118.7 278.8</b> (Rwy 8-26) <b>120.9 254.3</b> (Rwy 7L-25R, 7R-25L)	GND CON <b>119.75 269.2</b> (N) <b>132.55 269.2</b> (S)	CLNC DEL <b>118.1 269.2</b>	CPDLC
--------------------------	--	---	---	--------------------------------	-------

## DME or RADAR REQUIRED



ELEV 1135	<b>D</b>	TDZE 1116
-----------	----------	-----------



HIRL Rwy 8-26, 7L-25R and 7R-25L  
BEIL Runway 24

FAF to MAP 5.8 NM

Knots	60	90	120	150	180
Min:Sec	5:48	3:52	2:54	2:19	1:56

PHOENIX, ARIZONA

Amdt 2C 23APR20

TESLE I-AHA <u>21.5</u> RADAR I-AHA <u>17.9</u> CAGOR RADAR I-AHA <u>14.3</u> BALTE RADAR I-AHA <u>10.7</u> TOTIE RADAR I-AHA <u>7.2</u> ALOGE RADAR I-AHA <u>3.6</u>		VGSi and ILS glidepath not coincident (VGSi Angle 3.00/TCH 70). 3300 5000 PXR R-163 hdg 250° POPE △	
Use I-AHA DME when on the localizer course. 7000 6000 5000 4000 3000 *1840 GS 3.00° TCH 57 3.6 NM 3.6 NM 3.6 NM 3.5 NM 3.6 NM 1.1 NM 1.1 NM		*LOC only *I-AHA 2.5 I-AHA 1.5	
CATEGORY	A	B	C
S-ILS 7R		1369-¾	253 (300-¾)
S-LOC 7R		1520-¾	404 (400-¾)
CIRCLING	1740-1	605 (700-1)	2040-2¾ 905 (1000-2¾)
			2560-3 1425 (1500-3)

PHOENIX SKY HARBOR INTL (PHX)

ILS or LOC RWY 7R

33°26'N-112°01'W