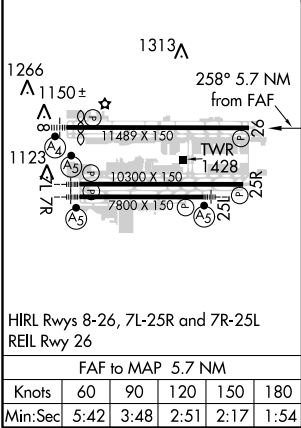
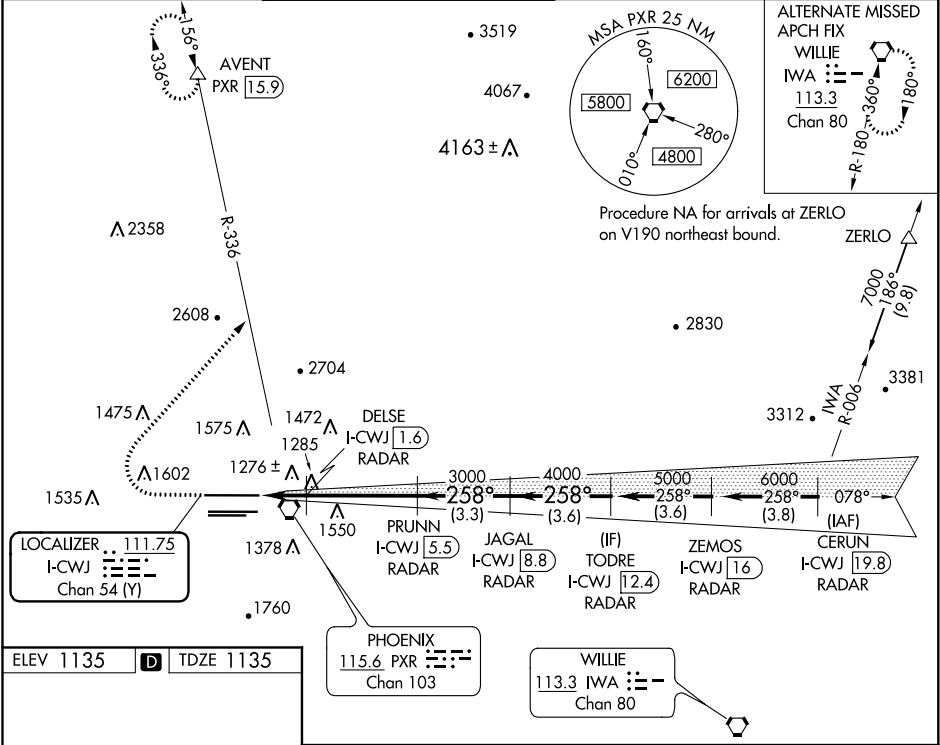


LOC/DME I-CWJ <b>111.75</b> Chan <b>54</b> (Y)	APP CRS <b>258°</b>	Rwy Idg <b>11489</b> TDZE <b>1135</b> Apt Elev <b>1135</b>
--	------------------------	--

ILS or LOC RWY 26  
PHOENIX SKY HARBOR INTL (PHX)

DME or RADAR required.	MISSED APPROACH: Climb to 2500 then climbing right turn to 5000 on heading 030° and PXR VORTAC R-336 to AVENT/PXR 15.9 DME and hold.
Simultaneous approach authorized.	

D-ATIS <b>127.575</b>	PHOENIX APP CON <b>128.65 353.9</b>	PHOENIX TOWER <b>118.7 278.8</b> (Rwy 8-26) <b>120.9 254.3</b> (Rwy 7L-25R, 7R-25L)	GND CON <b>119.75 269.2</b> (N) <b>132.55 269.2</b> (S)	CLNC DEL <b>118.1 269.2</b>	CPDLC
--------------------------	--	---	---	--------------------------------	-------



2500	5000	PXR R-336	AVENT	VGSI and ILS glidepath not coincident (VGSI Angle 3.00/TCH 71).
Use I-CWJ DME when on the localizer course.	DELSE I-CWJ 1.6 RADAR	PRUNN I-CWJ 5.5 RADAR	JAGAL I-CWJ 8.8 RADAR	TODRE I-CWJ 12.4 RADAR
*LOC only.	*I-CWJ 1.6	3000	4000	5000
1.2 NM	0.5	4 NM	3.3 NM	3.6 NM
CATEGORY	A	B	C	D
S-ILS 26	1385-3/4	250 (300-3/4)		
S-LOC 26	1580-1	445 (500-1)	1580-1 3/8	445 (500-3/8)
CIRCLING	1740-1	605 (700-1)	2040-2 3/4	2560-3
			905 (1000-2 3/4)	1425 (1500-3)

SW-4, 31 DEC 2020 to 28 JAN 2021

SW-4, 31 DEC 2020 to 28 JAN 2021