
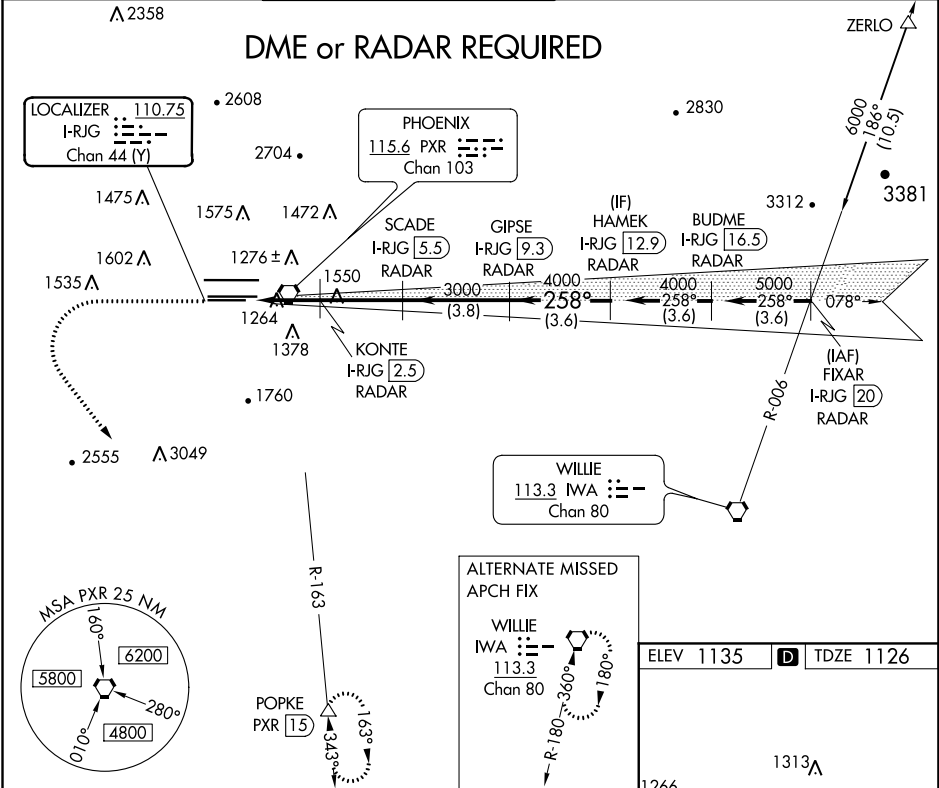


LOC/DME I-RJG 110.75 Chan 44 (Y)	APP CRS 258°	Rwy Idg TDZE 1126 Apt Elev 1135
--	------------------------	---

ILS or LOC RWY 25L
PHOENIX SKY HARBOR INTL (PHX)

V A	Autopilot coupled approach NA below 1925. Simultaneous approach authorized with Rwy 26.	<div>MALSR</div> <div></div>	MISSED APPROACH: Climb to 3000 then climbing left turn to 5000 on heading 130° and PXR R-163 to POPKE/15 DME and hold.			
D-ATIS 127.575	PHOENIX APP CON 128.65 353.9	PHOENIX TOWER 118.7 278.8 (Rwy 8-26) 120.9 254.3 (Rwy 7L-25R, 7R-25L)		GND CON 119.75 269.2 (N) 132.55 269.2 (S)	CLNC DEL 118.1 269.2	CPDLC



3000	5000	PXR R-163	POPKE △	*LOC only SCADE I-RJG 5.5 RADAR	GIPSE I-RJG 9.3 RADAR	HAMEK I-RJG 12.9 RADAR
Use I-RJG DME when on the localizer course.	I-RJG 0.2	KONTA I-RJG 2.5 RADAR	3000	258°	4000	4000
GS 3.00° TCH 49	2.7 NM	3 NM	3.8 NM	3.6 NM		
CATEGORY	A	B	C	D		
S-ILS 25L	1326-1/2	200 (200-1/2)				
S-LOC 25L	1520-1/2	394 (400-1/2)			1520-3/4 394 (400-3/4)	
CIRCLING	1740-1	605 (700-1)	2040-2 3/4 905 (1000-2 3/4)	2560-3 1425 (1500-3)		

