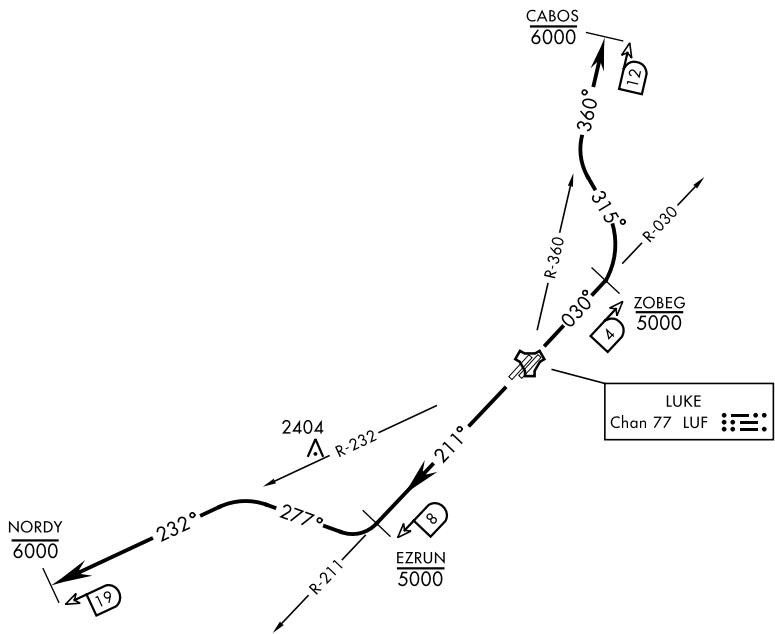


ATIS★134.925 269.9 CLNC DEL 126.25 273.475 GND CON 133.175 335.8 TOWER★ 119.1 379.9 LUKE DEP CON 118.15 363.125	AL-321 [USAF]	Rwy	Knots	60	120	180	240	300	360
		3L/R	V/V(fpm)	330	660	990	1320	1650	1980
		21L/R	V/V(fpm)	250	500	750	1000	1250	1500
		Minimum Climb Rate to 6000							



DEPARTURE ROUTE DESCRIPTION

TAKE-OFF RWY 3L: Climb on track 031°, thence...

TAKE-OFF RWY 3R: Climb on track 029°, thence...

Intercept LUF TACAN R-030 to LUF 4 DME (ZOBEG), then turn left on track 315° to intercept LUF R-360 to 12 DME (CABOS), then via (assigned route/stereo). Cross ZOBEG at or below 5000, cross CABOS at or below 6000, then as directed by ATC.

TAKE-OFF RWY 21L: Climb on track 112°, thence...

TAKE-OFF RWY 21R: Climb on track 211°, thence...

Intercept LUF TACAN R-211 to LUF 8 DME (EZRUN), then turn right on track 277° to intercept LUF R-232 to LUF 19 DME (NORDY), then via (assigned route/stereo). Cross EZRUN at or below 5000. Cross NORDY at or below 6000, then as directed by ATC.