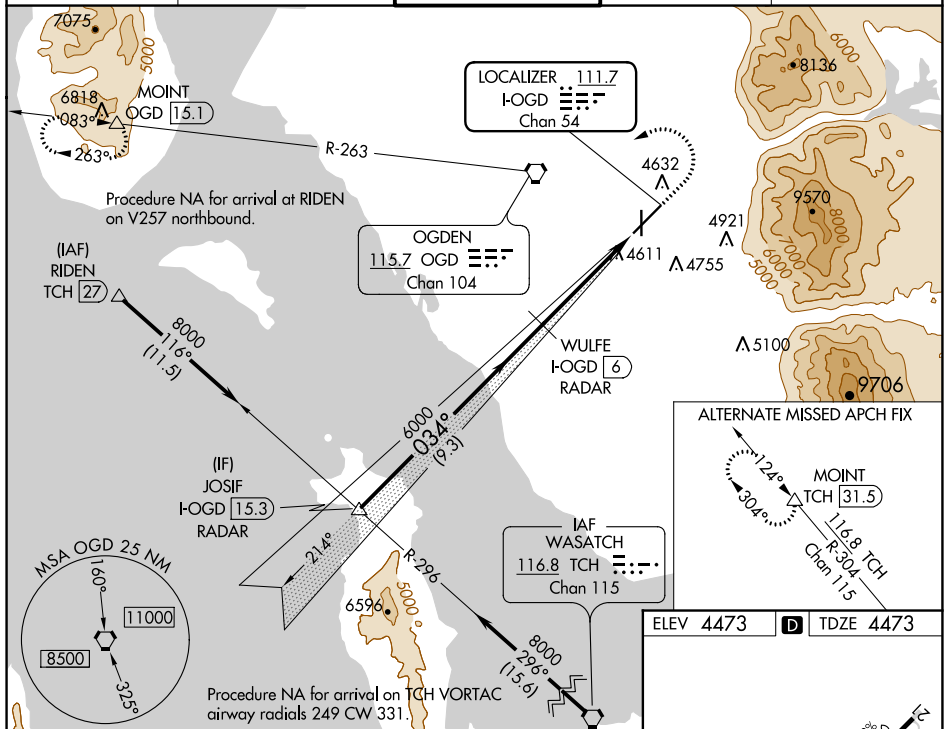


ILS or LOC RWY 3
OGDEN-HINCKLEY (OGD)

MALS

MISSED APPROACH: Climb to 5000 then climbing left turn to 9000 direct OGD VORTAC and on OGD VORTAC R-263 to MOINT/OGD 15.1 DME and hold, continue climb-in-hold to 9000.

ATIS 125.55	SALT LAKE CITY APP CON 121.1 319.25	OGDEN TOWER* 118.7 (CTAF) 0 253.5	GND CON 121.7	UNICOM 122.95
----------------	--	--------------------------------------	------------------	------------------



SW-4, 31 DEC 2020 to 28 JAN 2021

SW-4, 31 DEC 2020 to 28 JAN 2021