

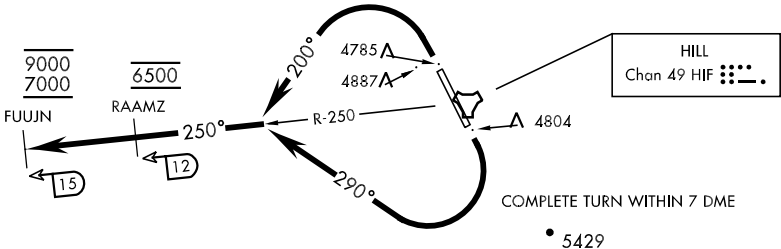
ATIS 134.925 397.9  
CLNC DEL  
124.1 335.8  
GND CON  
121.6 275.8  
HILL TOWER  
127.15 263.15  
SALT LAKE CITY  
DEP CON  
121.1 319.25  
CLOVER CON  
134.1 285.65

Rwy	Knots	60	120	180	240	300	360
14 (a)	V/V(fpm)	580	1160	1740	2320	2900	3480
14 (b)	V/V(fpm)	260	520	780	1040	1300	1560
32 (c)	V/V(fpm)	660	1320	1980	2640	3300	3960

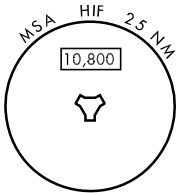
ATC Climb Rate

- (a) To 5200  
(b) From 5200 to 6300  
(c) To 5700

FOR STEREO FLIGHT  
PLAN USE ONLY



AIRSPED IN EXCESS OF 350 KIAS NOT  
AUTHORIZED UNTIL ESTABLISHED:  
RWY 14 HEADING 290°  
RWY 32 HEADING 200°



EMERG SAFE ALT 100 NM 15,600

DEPARTURE ROUTE DESCRIPTION

TAKE-OFF RWY 14: Turn right heading 290°, intercept HIF TACAN R-250 outbound prior to 12 DME (complete turn within 7 DME), cross RAAMZ at 6500, maintain block 7000 through 9000.

TAKE-OFF RWY 32: Turn left heading 200°, intercept HIF TACAN R-250 outbound prior to 12 DME, cross RAAMZ at 6500, maintain block 7000 through 9000.