

# HI-ILS or LOC Y RWY 14

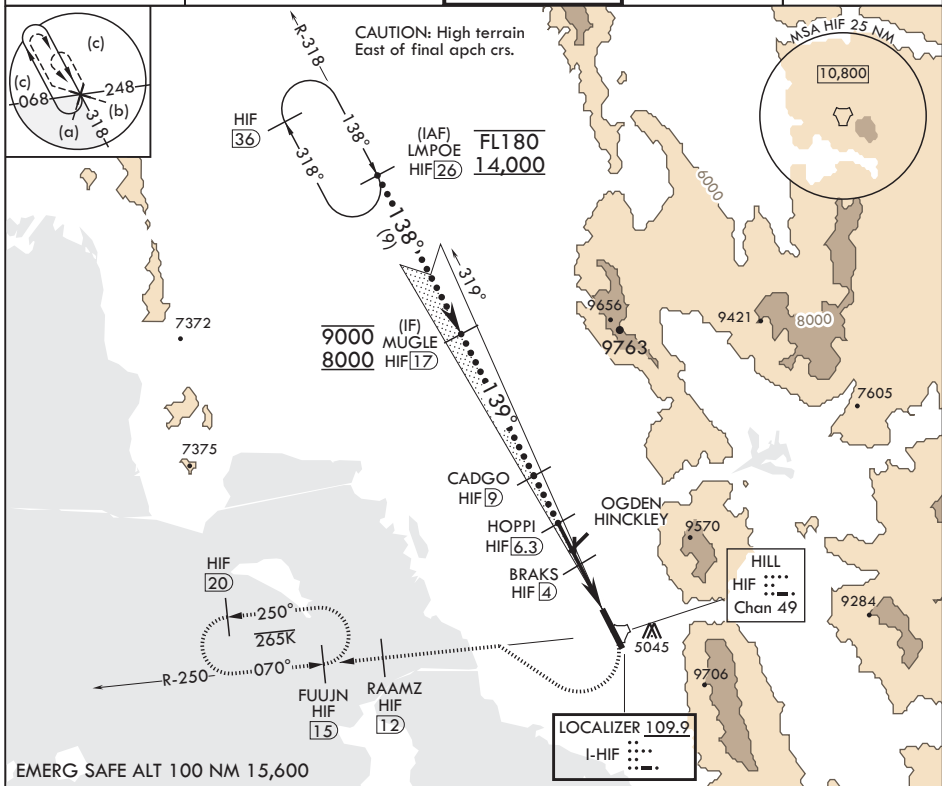
LOC I-HIF 109.9	APCH CRS 139°	Rwy Idg 13,500
		TDZE 4786
		Arpt Elev 4789

JAL-296 (USAF)

HILL AFB (KHIF)

<p><b>⚠</b> * When ALS inop, increase RVR to 40, and vis to 3/4 mile.                  ** When ALS inop, increase RVR to 55, and vis to 1 mile.                  *** Circling not authorized NE of Rwy 14-32.</p>	<p>ALSF-2</p> 	<p>MISSED APPROACH: Climb to 5300, then turn right heading 290°, remain within HIF TACAN 5.7 DME until established on 290° hdg. Intercept the HIF R-250 outdb. Cross RAAMZ at 6500, then climb and maintain 7200 direct to FUJUN and hold.</p>
---	---	--

<p>ATIS 134.925 397.9</p>	<p>SALT LAKE CITY APP CON 121.1 319.25</p>	<p>TOWER 127.15 263.15</p>	<p>GND CON 121.6 275.8</p>	<p>CLNC DEL 124.1 335.8</p>
-------------------------------	--	--------------------------------	--------------------------------	---------------------------------



LMPOE  
R-318  
26

MUGLE  
Intcp  
Lczr  
17

CADGO  
9

HOPPI  
6.3

BRAKS  
4

TACAN

5300

6500

HIF  
R-250

ELEV 4789

TDZE 4786

FL180  
14,000

9000  
8000

GS 2.80°  
TCH 57

38°

39°

7000

6300

6289

5700

2.3 NM

2.5 NM

LOC only

LOC MAP 1.5

139° 4.8NM  
from FAF

TWR 4918

BCN 4934

Approach lights  
Rwy 14 2400'

HIRL all Rwys

REIL all Rwys

CATEGORY

C

D

E

S-ILS 14\*

4986/24

200

(200-1/2)

S-LOC 14\*\*

5040/24

254

(300-1/2)

C CIRCLING\*\*\*

5240-1 1/2  
451 (500-1 1/2)

5340-2  
551 (600-2)

5860-3  
1071 (1100-3)

FAF to MAP 4.8 NM

Knots

120

140

160

180

200

Min:Sec

2:24

2:03

1:48

1:36

1:26

# HI-ILS or LOC Y RWY 14