

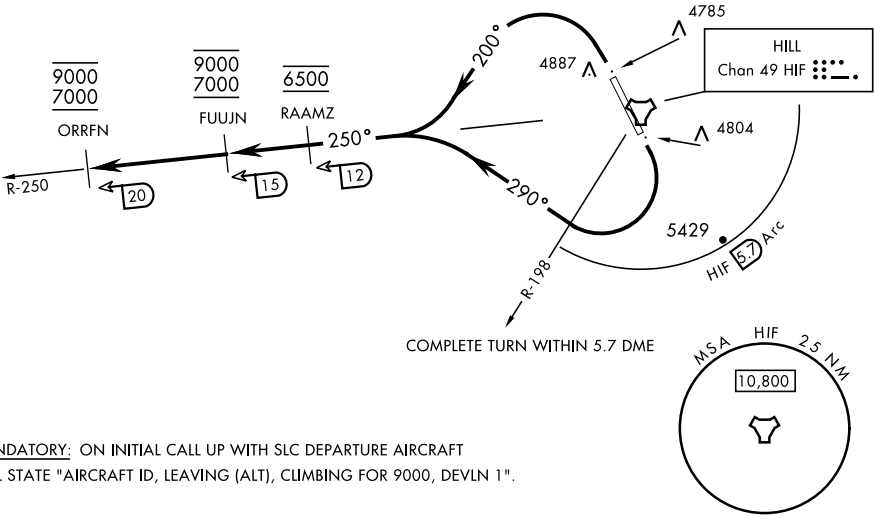
ATIS 134.925 397.9  
CLNC DEL  
124.1 335.8  
GND CON  
121.6 275.8  
HILL TOWER  
127.15 263.15  
SALT LAKE CITY  
DEP CON  
121.1 319.25  
CLOVER CON  
134.1 285.65

Rwy	Knots	60	120	180	240	300	360
14	V/V(fpm)	2095	4190	6285	8380	10475	12570
32	V/V(fpm)	4610	9220	13830	18440	23050	27660

ATC Climb Rate to 5200

FOR STEREO FLIGHT  
PLAN USE ONLY

AIRSPED IN EXCESS OF 350 KIAS NOT  
AUTHORIZED UNTIL ESTABLISHED:  
RWY 14 HEADING 290°  
RWY 32 HEADING 200°



**MANDATORY:** ON INITIAL CALL UP WITH SLC DEPARTURE AIRCRAFT  
WILL STATE "AIRCRAFT ID, LEAVING (ALT), CLIMBING FOR 9000, DEVLN 1".

EMERG SAFE ALT 100 NM 15,600

DEPARTURE ROUTE DESCRIPTION

**TAKE-OFF RWY 14:** Turn right heading 290°, remain within HIF TACAN 5.7 DME until passing the HIF R-198 and established on a heading greater than 256°, intercept HIF R-250 outbound prior to HIF 12 DME, cross RAAMZ at 6500, climb and maintain 7000 block 9000 as depicted.

**TAKE-OFF RWY 32:** Turn left heading 200°, intercept HIF TACAN R-250 outbound prior to HIF 12 DME, cross RAAMZ at 6500, climb and maintain 7000 block 9000 as depicted.