

HI-TACAN Y RWY 21L

TACAN LSV Chan 12	APCH CRS 210°	Rwy ldg 21L 10,051 TDZE 1865 Arpt Elev 1869	Rwy ldg 21R 10,120 TDZE 1869
----------------------	------------------	---	---------------------------------

JAL-227 [USAF]

NELLIS AFB (KLSV)

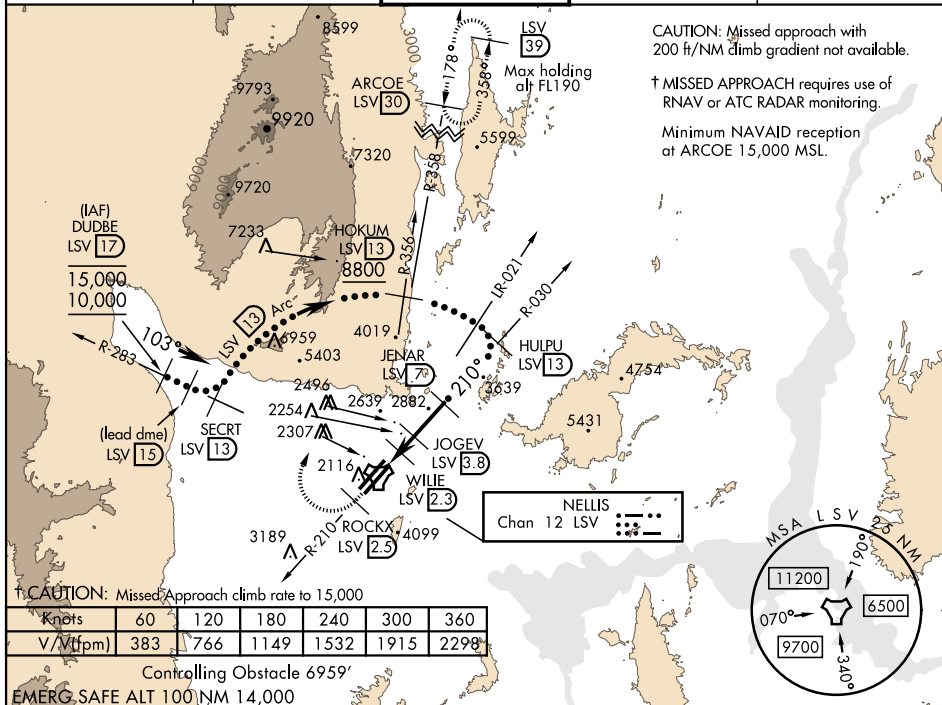
- * When ALS inop, increase CAT CDE vis to 1¾ miles.
 ** Circling not authorized E of Rwy 3R-21L.

ALSf-1

A1

† MISSED APPROACH: Climb to 15,000, intercept LSV TACAN R-210 to 2.5 DME (ROCKX), then climbing right turn heading 020° to join LSV R-358 to ARCOE and hold, continue climb in hold to 15,000. Missed approach not for civil use.

ATIS 270.1	NELLIS APP CON 124.95 273.55	NELLIS TOWER 132.55 327.0	GND CON 121.8 275.8	CLNC DEL 120.9 289.4
---------------	---------------------------------	------------------------------	------------------------	-------------------------



VGSi and descent angles not coincident (VGSi angle 3.00/TCH 54).		15,000 LSV R-210	ROCKX LSV 2.5	hdg 020°	ARCOE R-358 30	ELEV 1869	TDZE 21L 1865 TDZE 21R 1869
CATEGORY	C		D		E		
S-21L *	2460-1¼		595 (600-1¼)				
SIDESTEP 21R	2460-1		591 (600-1)				
CIRCLING **	2620-2¼ 751 (800-2¼)		2840-3 971 (1000-3)		3040-3 1171 (1200-3)		

HI-TACAN Y RWY 21L