

HI-ILS or LOC Z RWY 21L

LOC I-DIQ
109.1APCH CRS
209°

| | | |
|-----------|--------|--------|
| Rwy Idg | 21L | 21R |
| TDZE | 10,051 | 10,120 |
| Arpt Elev | 1865 | 1869 |

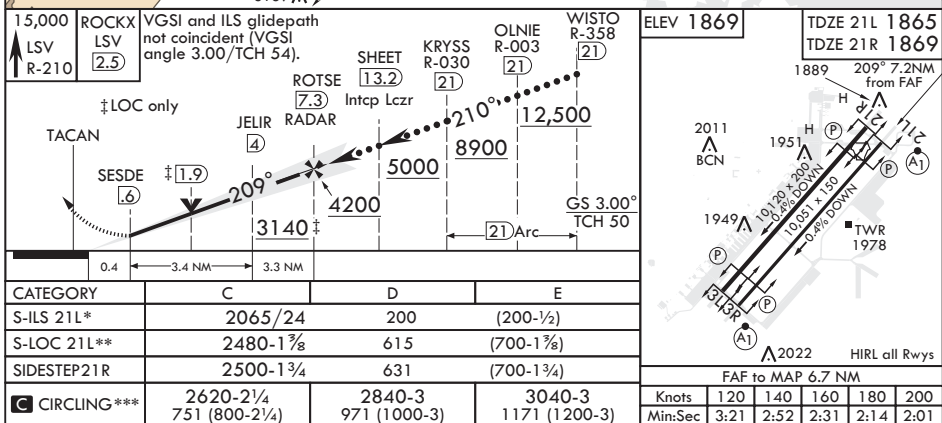
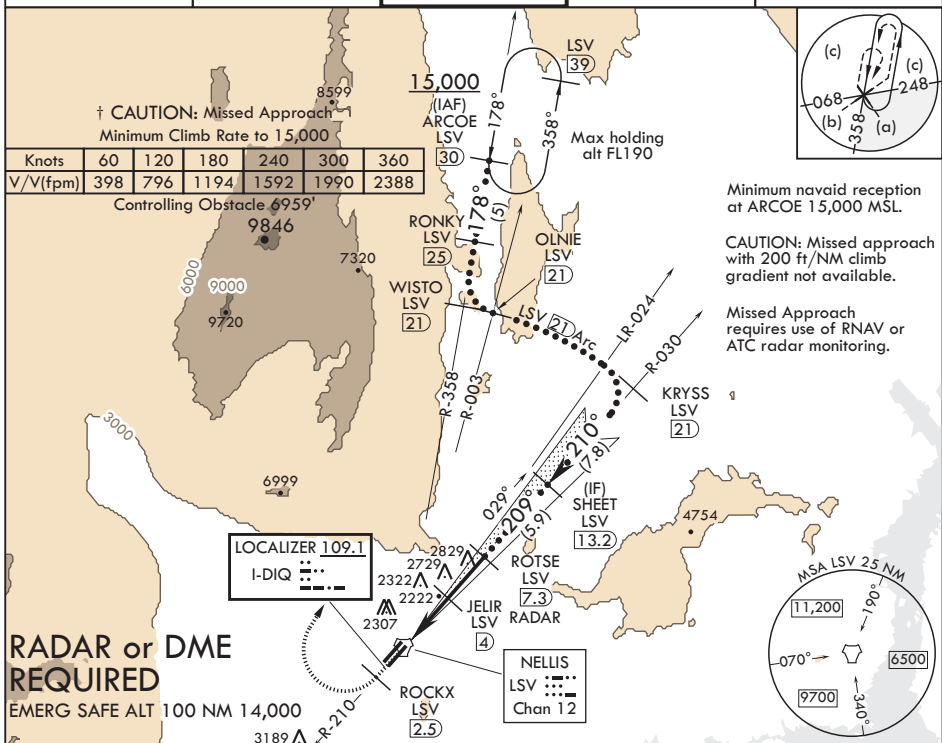
JAL-227 (USAF)

NELLIS AFB (KLSV)

† When ALS inop, increase CAT CDE RVR to 40, vis to 3/4 mile.
 ** When ALS inop, increase CAT CDE vis to 1 3/4 miles.
 *** Circling not authorized E of Rwy 3R-21L.

Rwy 21L
ALS-F-1
(A1)

† MISSED APPROACH: Climb to 15,000, intercept LSV TACAN R-210 to 2.5 DME (ROCKX), then climbing right turn heading 020° to join LSV R-358 to ARCOE and hold, continue climb-in-hold to 15,000. Missed approach not for civil use.

ATIS
270.1APP CON
124.95 273.55TOWER
132.55 327.0GND CON
121.8 275.8CLNC DEL
120.9 289.4

HI-ILS or LOC Z RWY 21L