

ATIS 270.1
CLNC DEL
120.9 289.4
GND CON
121.8 275.8
NELLIS TOWER
132.55 327.0
NELLIS DEP CON
135.1 385.4

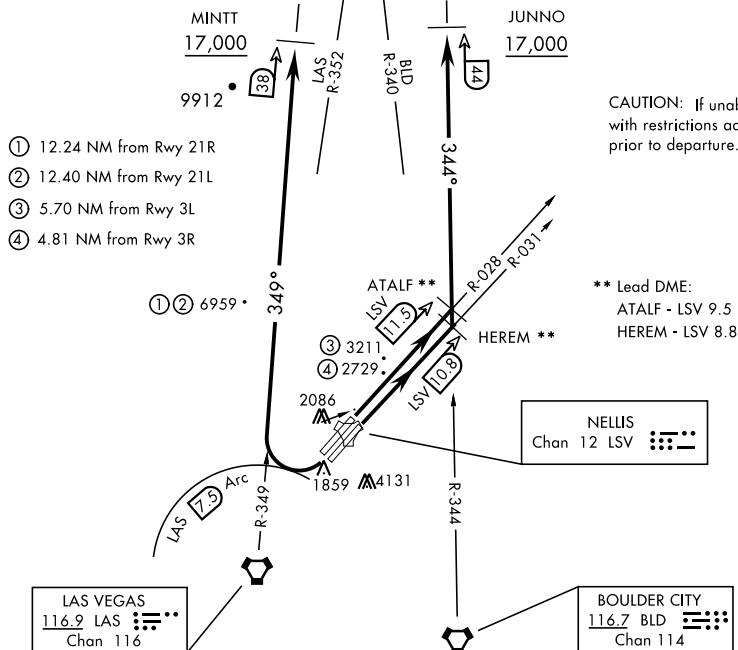
SHL-227 [USAF]

Rwy	Knots	60	120	180	240	300	360
* 3 L (a)	V/V(fpm)	269	538	807	1076	1345	1614
* 3 R (b)	V/V(fpm)	229	458	687	916	1145	1374
† 3 L (c)	V/V(fpm)	498	996	1494	1992	2490	2988
† 3 R (c)	V/V(fpm)	496	992	1488	1984	2480	2976
* 21 L (d)	V/V(fpm)	389	778	1167	1556	1945	2334
* 21 R (d)	V/V(fpm)	395	790	1185	1580	1975	2370
† 21 L (c)	V/V(fpm)	453	906	1359	1812	2265	2718
† 21 R (c)	V/V(fpm)	457	914	1371	1828	2285	2742

* Minimum † ATC Climb Rate

(a) to 3400
 (b) to 3000
 (c) to 17,000
 (d) to 8500

NOT FOR CIVIL USE



CAUTION: If unable to comply with restrictions advise ATC prior to departure.

** Lead DME:
ATALF - LSV 9.5
HERFEM - LSV 8.8

DEPARTURE ROUTE DESCRIPTION

TAKE-OFF RWY 3L: Fly runway heading to intercept the LSV TACAN R-028 then direct ATALF, intercept the BLD VORTAC R-344 then direct JUNNO, cross JUNNO at or above 17,000, then via assigned route.

TAKE-OFF RWY 3R: Fly runway heading to intercept the LSV TACAN R-031 then direct HEREM, intercept the BLD VORTAC R-344 then direct JUNNO, cross JUNNO at or above 17,000, then via assigned route.

TAKE-OFF RWY 21L/R: Turn right to intercept LAS VORTAC R-349 outbound. Remain North of LAS 7.5 DME turning Northbound. Intercept LAS R-349 between 5000 and 6000, do not proceed West of LAS R-349. Cross MINTT at above 17,000, then via assigned route.

NOISE ABATEMENT PROCEDURES: Fly IAW Nellis Noise Abatement instructions published in AP/1.

DREAM SIX DEPARTURE (DREAM6 • DREAM)

Amdt 5 29MAR18

LAS VEGAS, NEVADA

NELLIS AFB (KLSV)