

VOR/DME RWY 21  
KINGMAN (IGM)



**MISSED APPROACH:** Climbing right turn to 6000 via IGM VOR/DME R-208 then climbing right turn to 9000 direct IGM VOR/DME and hold.

ASOS <b>119.275</b>	LOS ANGELES CENTER <b>124.85 319.2</b>	UNICOM <b>122.8 (CTAF) 0</b>
------------------------	---	---------------------------------

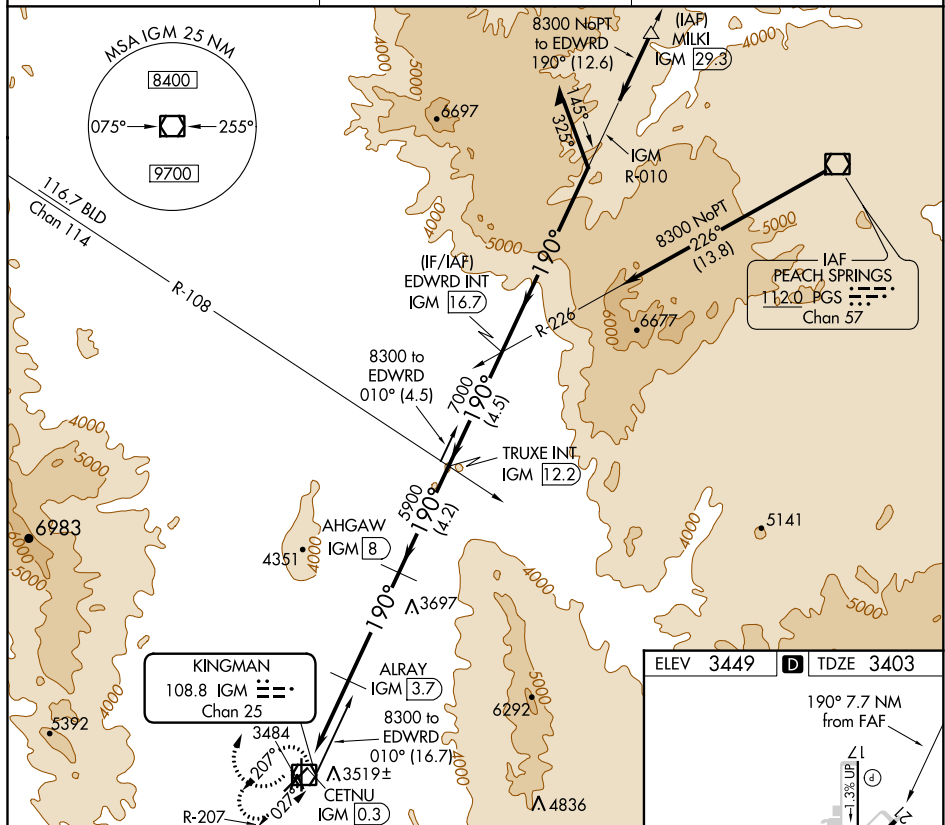
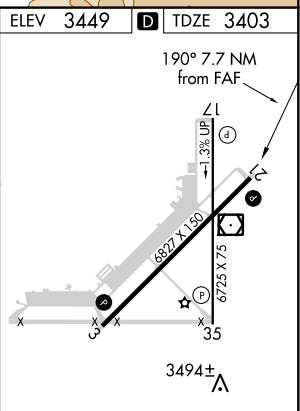


Figure 1: Sample chart showing a portion of a coastal area with various navigational aids and soundings. The chart includes a compass rose indicating magnetic variation (6000, 9000, IGM), a scale bar (3.4 NM, 4.3 NM, 4.2 NM, 4.5 NM), and several soundings (4540, 5900, 7000, 8300). A line of sight is drawn from a point labeled 'CETNU IGM 0.3' to a point labeled 'EDWRD INT IGM 16.7', with a bearing of 010° and a distance of 1.90 NM. Other features include 'ALRAY IGM 3.7', 'AHGAW IGM 8', 'TRUXE INT IGM 12.2', and 'Remain within 10 NM'.

CATEGORY	A	B	C	D
S-21	3880-1	477 (500-1)	3880-1¼ 477 (500-1¼)	3880-1½ 477 (500-1½)
CIRCLING	3980-1 531 (600-1)	4020-1 571 (600-1)	4020-1½ 571 (600-1½)	4140-2¼ 691 (700-2¼)



MIRL Rwys 3-21 and 17-35 **L**  
REIL Rwys 3 and 21 **L**

SW-4, 31 DEC 2020 to 28 JAN 2021