

FALLON, NEVADA

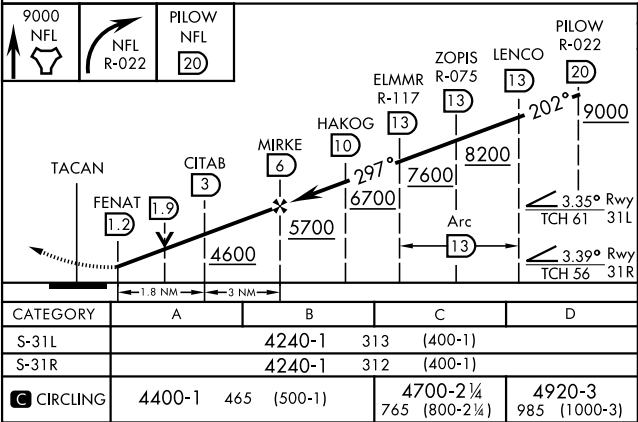
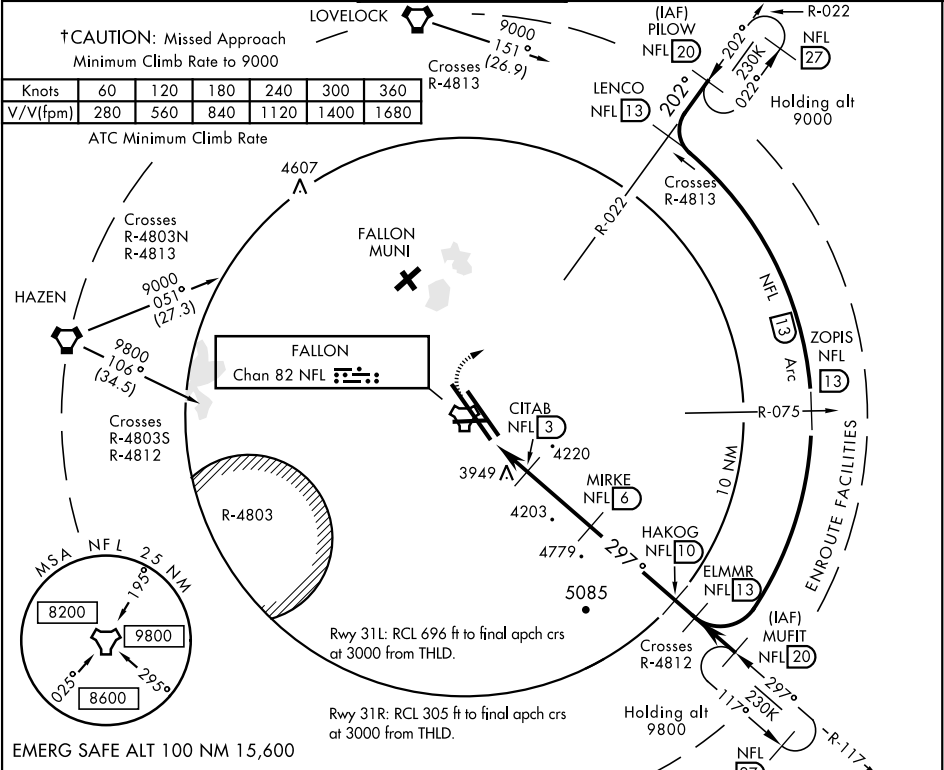
TACAN RWY 31L/R

TACAN NFL	APCH CRS	Rwy Idg	31L 14,001	31R 11,076
Chan 82	297°	TDZE	31L 3927	31R 3928
		Arpt Elev	3935	

AL-143 [USN] FALLON NAS (VAN VOORHIS FLD) (KNFL)

† MISSED APPROACH: Climb direct NFL TACAN, then climbing right turn to 9000. Intercept NFL R-022 outbound to PILOW and hold. Missed approach requires minimum climb of 280 ft/NM to 9000.

ATIS ★	NAVY FALLON APP CON	NAVY FALLON TOWER ★	GND CON	CLNC DEL	ASR/PAR
370.925	120.85 360.2	119.25 340.2	251.15	353.55	



FALLON, NEVADA

39° 25'N-118° 42'W FALLON NAS (VAN VOORHIS FLD) (KNFL)

Amtd 2 28FEB19

TACAN RWY 31L/R

SW-4, 31 DEC 2020 to 28 JAN 2021