

FALLON, NEVADA

RNAV (GPS) RWY 31L

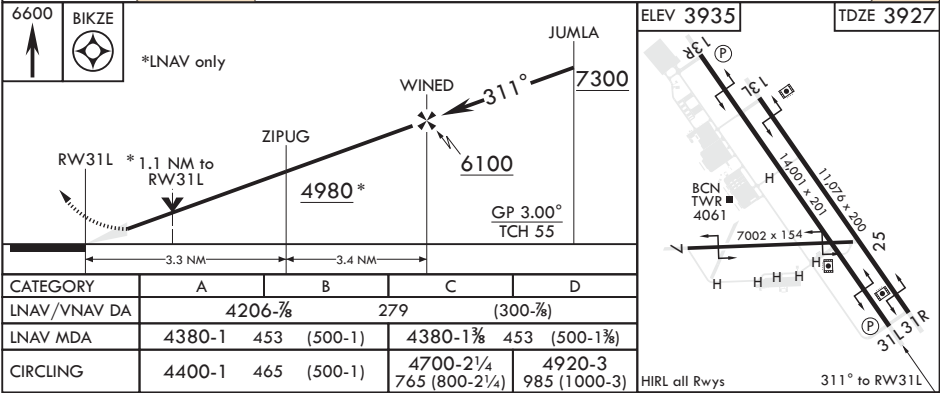
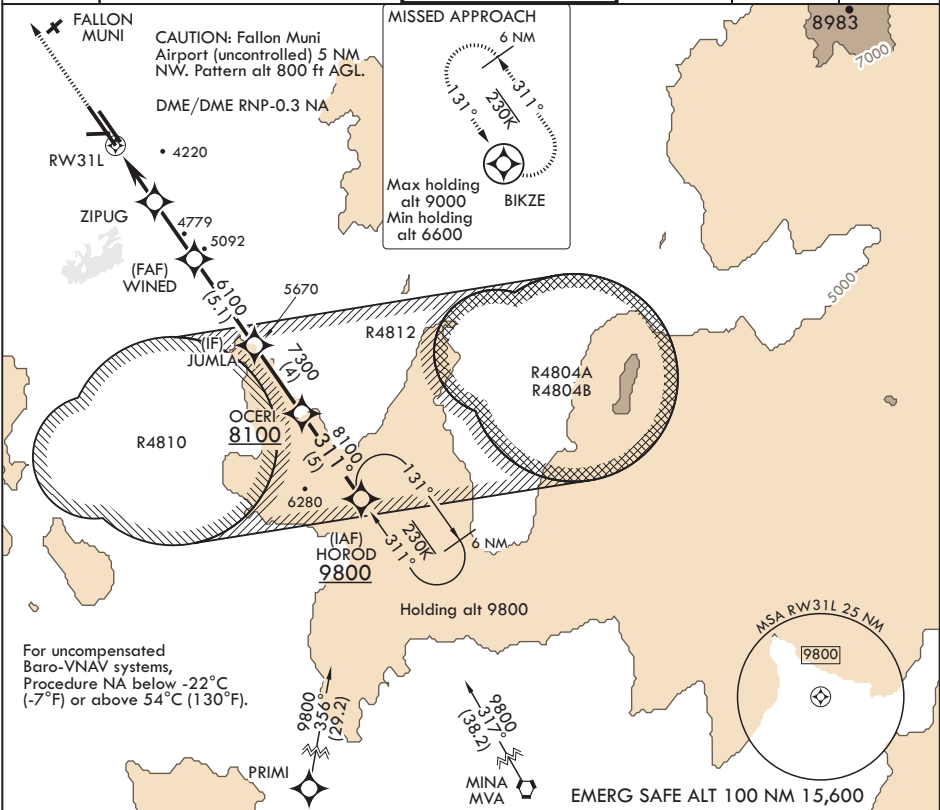
APCH CRS 311°	Rwy Idg TDZE Arpt Elev	14,001 3927 3935
------------------	------------------------------	------------------------

AL-143 (USN)

FALLON NAS (VAN VOORHIS FLD) (KNFL)

MISSED APPROACH: Climb to 6600 direct BIKZE and hold.	
---	--

ATIS★ 370.925	NAVY FALLON APP CON/DEP CON 120.85 360.2	NAVY FALLON TOWER★ 119.25 340.2	GND CON 251.15	CLNC DEL 353.55	ASR/PAR
------------------	---	------------------------------------	-------------------	--------------------	---------



FALLON, NEVADA

39°25'N - 118°42'W

FALLON NAS (VAN VOORHIS FLD) (KNFL)

Amndt 2 03JAN19

RNAV (GPS) RWY 31L

SW-4, 31 DEC 2020 to 28 JAN 2021

SW-4, 31 DEC 2020 to 28 JAN 2021